

AMÉNS (HARD 610)

GRUPO INSTRUMENTAL PGM

ROBERT RAMSAY
ARR. DENIS NOGUEIRA

REVERENTE = 80

(A)

Musical score for 'AMÉNS (HARD 610)' featuring various instruments. The score is written in 4/4 time and includes dynamics such as *mf* (mezzo-forte) and *mp* (mezzo-piano). The instruments listed are:

- FLUTE TRANSVERSAL
- SOPRANO RECORDER I
- SOPRANO RECORDER II
- CLARINET IN B \flat I
- CLARINET IN B \flat II
- CLARINET IN B \flat III
- ALTO SAXOPHONE I
- ALTO SAXOPHONE II
- TENOR SAXOPHONE
- TRUMPET IN B \flat I
- TRUMPET IN B \flat II
- TROMBONE
- BASE

The score includes a key signature of one flat (B \flat) and a tempo marking of REVERENTE = 80. The piece is marked with a rehearsal symbol (A) at the beginning. The bass line includes chord markings: B \flat , C \flat 7(ADD13), D, E \flat , D, and G.

2

(B)

FL. *mf*

S. REC. *mf*

S. REC. *mf*

CL. *mf*

CL. *mf*

CL. *mf*

ALTO SAX. *mf*

ALTO SAX. *mf*

TEN. SAX. *mf*

TPT. *mf*

TPT. *mf*

TBN. *mf*

Gm Cm/Eb Cm7 Cm7(ADD13) Gm/D Dm7 G

(C)

FL. *mf*

S. REC. *mf*

S. REC. *mf*

CL. *mf*

CL. *mf*

CL. *mf*

ALTO SAX. *mf*

ALTO SAX. *mf*

TEN. SAX. *mf*

TPT.

TPT.

TBN.

E \flat B \flat /D A \flat /C E \flat /G A \flat E \flat /G F 7 B \flat E \flat

(D)

FL. *mf*

S. REC. *mf*

S. REC. *mf*

CL. *mf*

CL. *mp*

CL. *mp*

ALTO SAX. *mf*

ALTO SAX. *mf*

TEN. SAX. *mf*

TPT. *mf*

TPT. *mf*

TBN. *mf*

Ab Eb Fm Cm Db Bbm

FL.

S. REC.

S. REC.

CL.

CL.

CL.

ALTO SAX.

ALTO SAX.

TEN. SAX.

TPT.

TPT.

TBN.

Ab/Eb

Eb

Ab

AMÉNS (HASD 610)

GRUPO INSTRUMENTAL PGM

FLUTE TRANSVERSAL

ROBERT RAMSAY
ARR. DENIS NOGUEIRA

(A) REVERENTE = 80

4 *mf*

(B)

4 *mf*

MELVIN WEST

(C)

8 *mf*

WALTER H. HALL

(D)

13 *mf*

MELODIA TRADICIONAL DINAMARQUESA

AMÉNS (HASD 610)

GRUPO INSTRUMENTAL PGM

SOPRANO RECORDER I

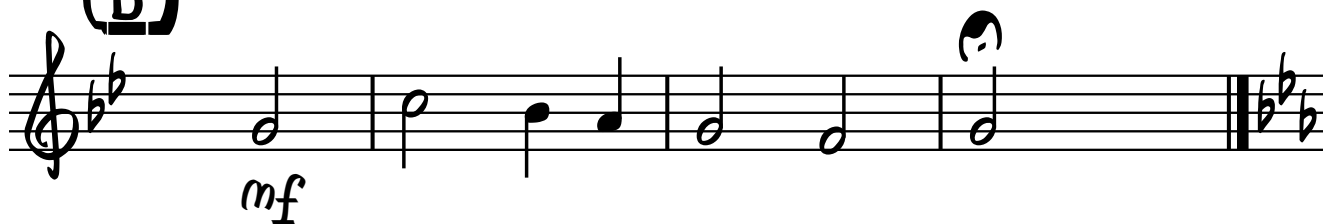
ROBERT RAMSAY
ARR. DENIS NOGUEIRA

(A) REVERENTE = 80



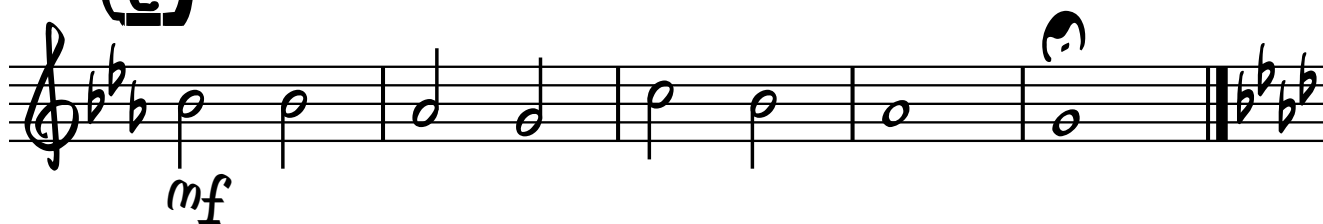
(B)

MELVIN WEST



(C)

WALTER H. HALL



(D)

MELODIA TRADICIONAL DINAMARQUESA



AMÉNS (HASD 610)

GRUPO INSTRUMENTAL PGM

SOPRANO RECORDER II

ROBERT RAMSAY
ARR. DENIS NOGUEIRA

(A) REVERENTE = 80



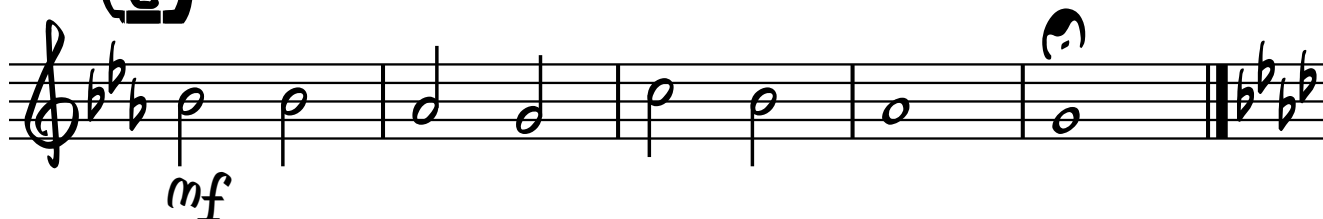
MELVIN WEST

(B)



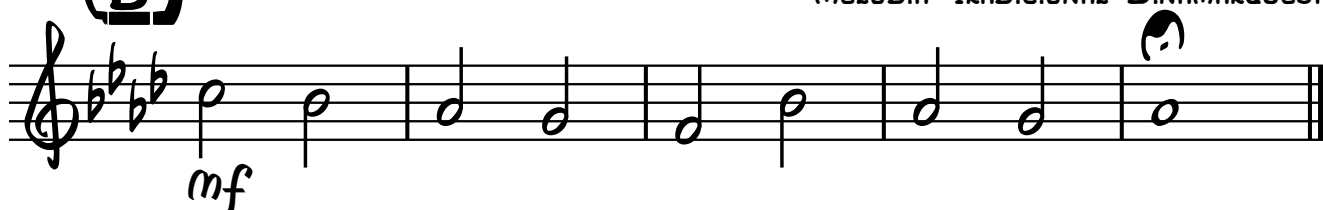
WALTER H. HALL

(C)



(D)

MELODIA TRADICIONAL DINAMARQUESA



AMÉNS (HARD 610)

CLARINET IN B \flat I GRUPO INSTRUMENTAL PGM

ROBERT RAMSAY
ARR. DENIS NOGUEIRA

(A) REVERENTE = 80



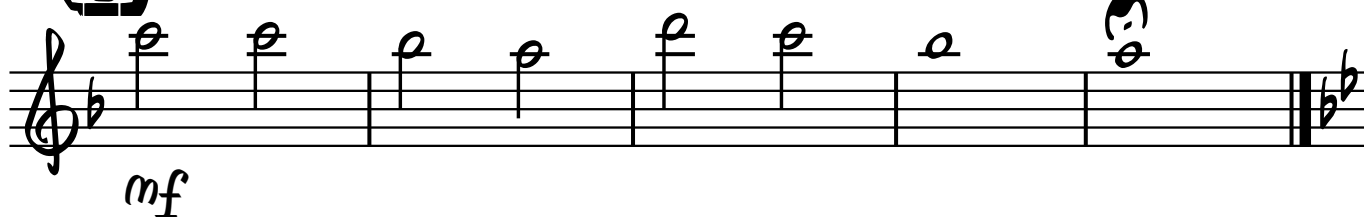
MELVIN WEST

(B)



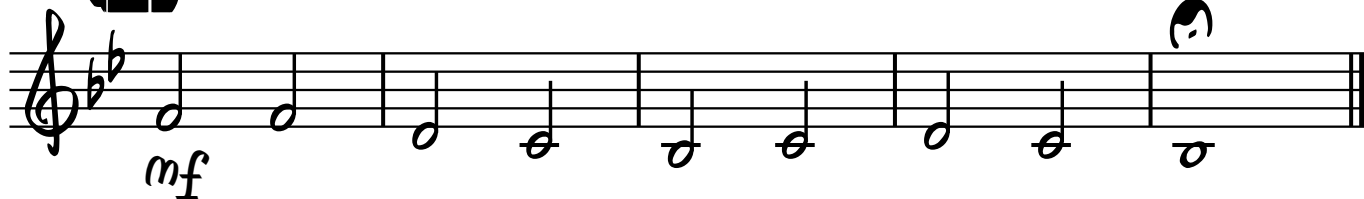
WALTER H. HALL

(C)



(D)

MELODIA TRADICIONAL DINAMARQUESA



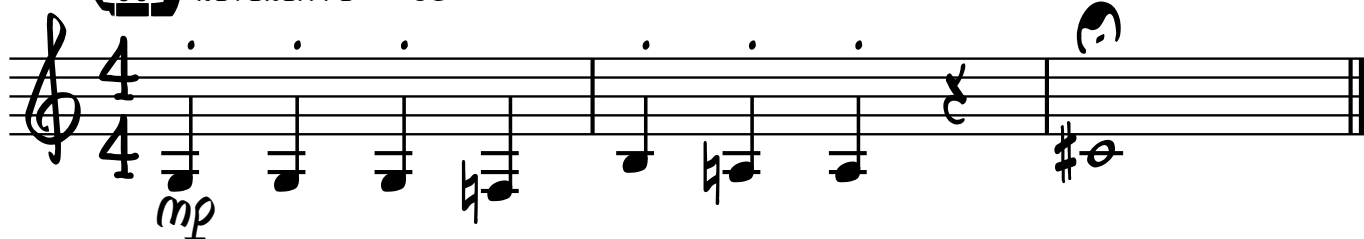
AMÉNS (HASD 610)

GRUPO INSTRUMENTAL PGM

CLARINET IN B \flat II

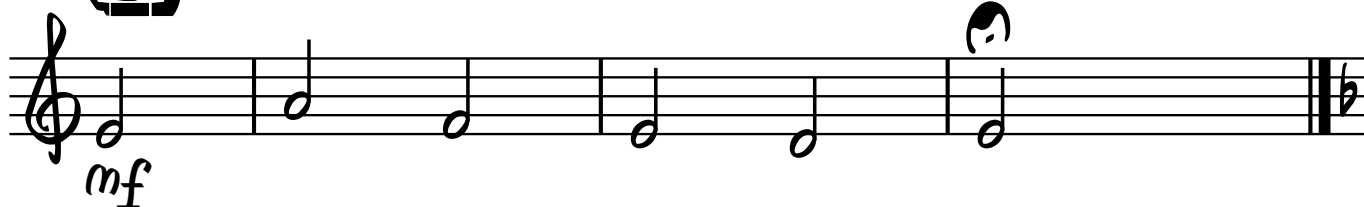
ROBERT RAMSAY
ARR. DENIS NOGUEIRA

(A) REVERENTE = 80



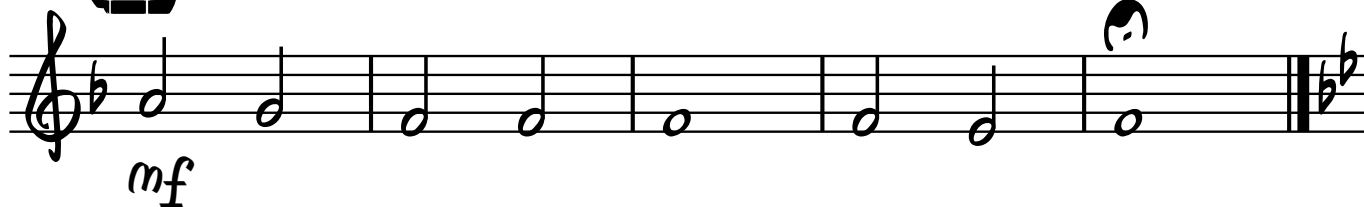
(B)

MELVIN WEST



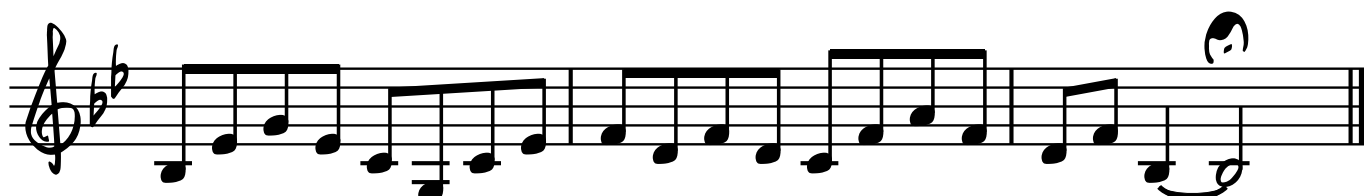
(C)

WALTER H. HALL



(D)

MELODIA TRADICIONAL DINAMARQUESA



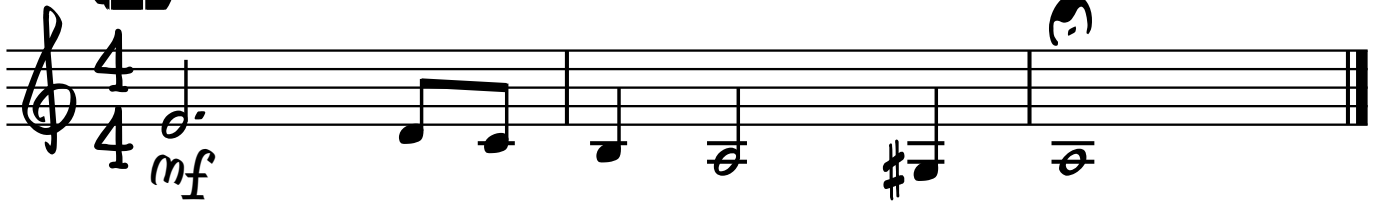
AMÉNS (HARD 610)

GRUPO INSTRUMENTAL PGM

CLARINET IN B \flat III

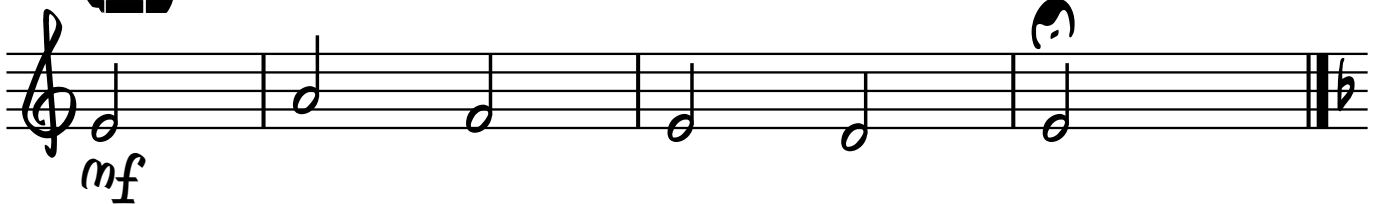
ROBERT RAMSAY
ARR. DENIS NOGUEIRA

(A) REVERENTE = 80



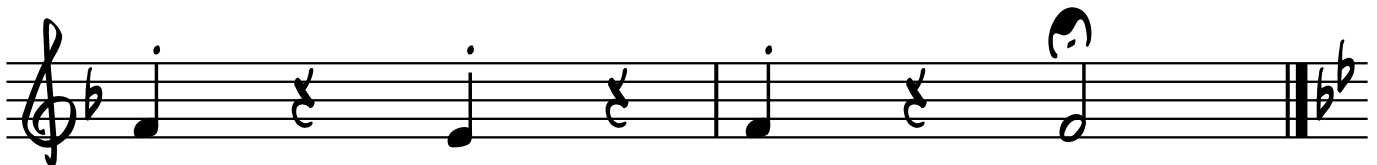
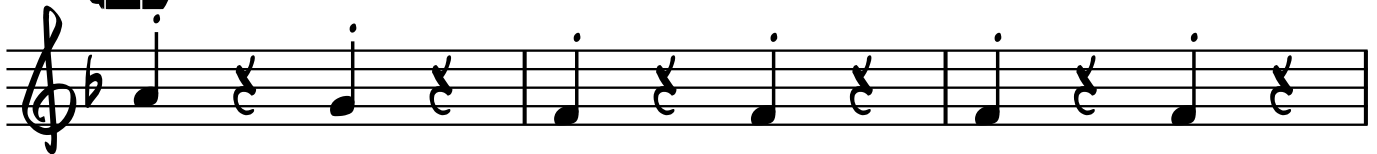
(B)

MELVIN WEST



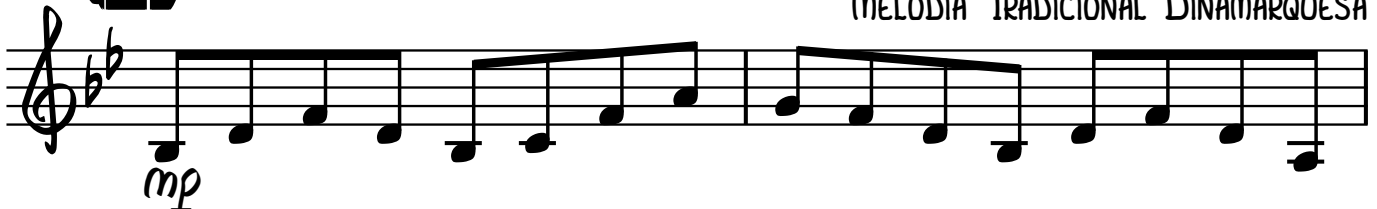
(C)

WALTER H. HALL



(D)

MELODIA TRADICIONAL DINAMARQUESA



AMÉNS (HASD 610)

GRUPO INSTRUMENTAL PGM

ALTO SAXOPHONE I

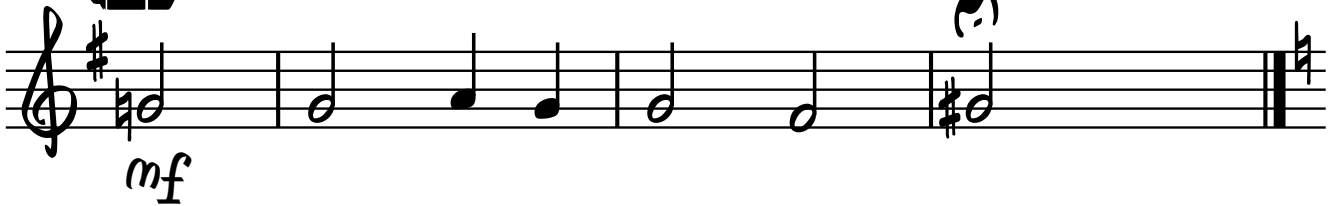
ROBERT RAMSAY
ARR. DENIS NOGUEIRA

(A) REVERENTE = 80



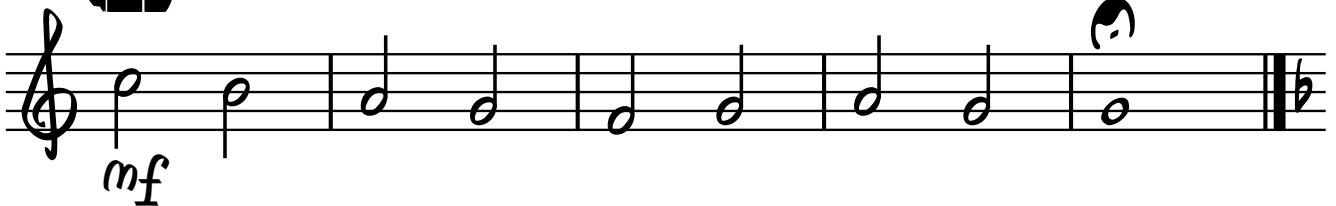
(B)

MELVIN WEST



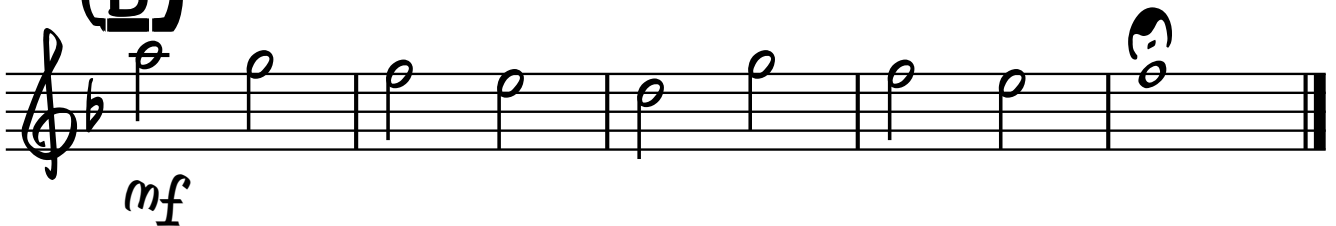
(C)

WALTER H. HALL



(D)

MELODIA TRADICIONAL DINAMARQUESA



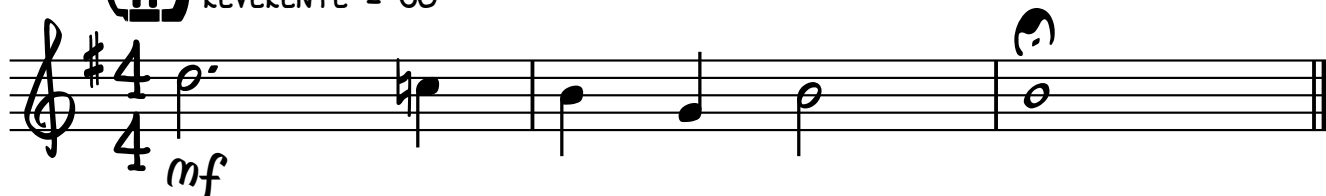
AMÉNS (HARD 610)

GRUPO INSTRUMENTAL PGM

ALTO SAXOPHONE II

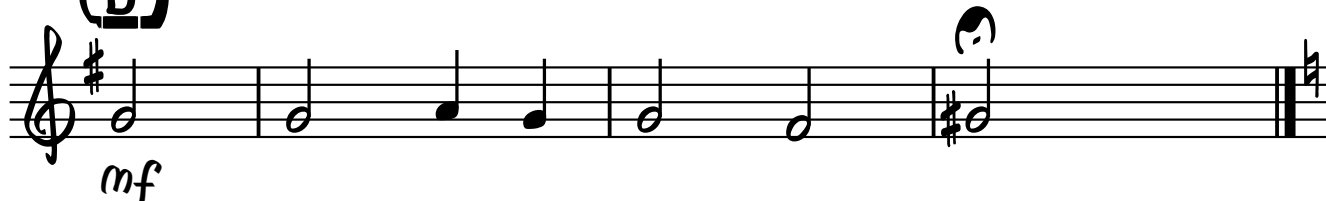
ROBERT RAMSAY
ARR. DENIS NOGUEIRA

(A) REVERENTE = 80



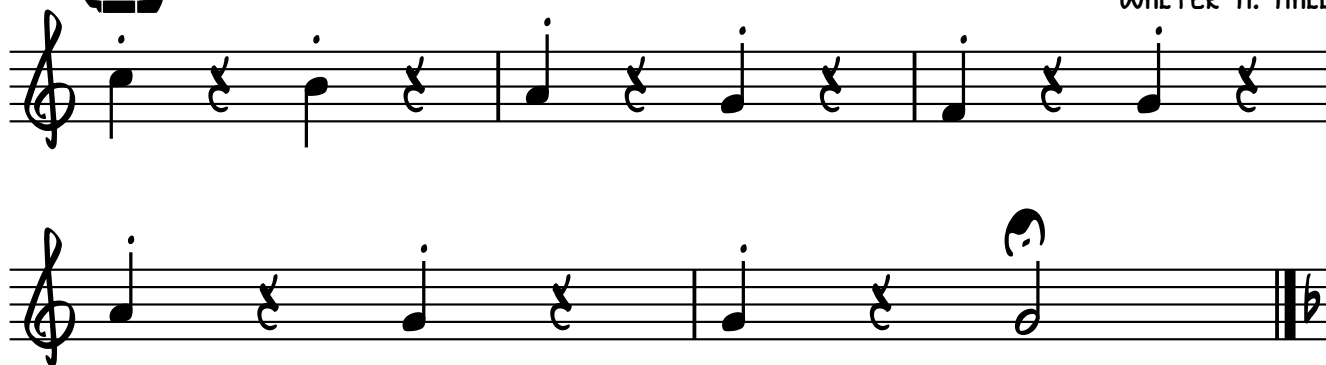
(B)

MELVIN WEST



(C)

WALTER H. HALL



(D)

MELODIA TRADICIONAL DINAMARQUESA



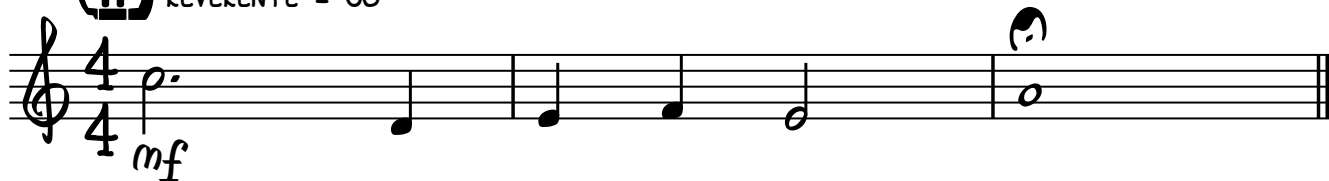
TENOR SAXOPHONE

AMÉNS (HASD 610)

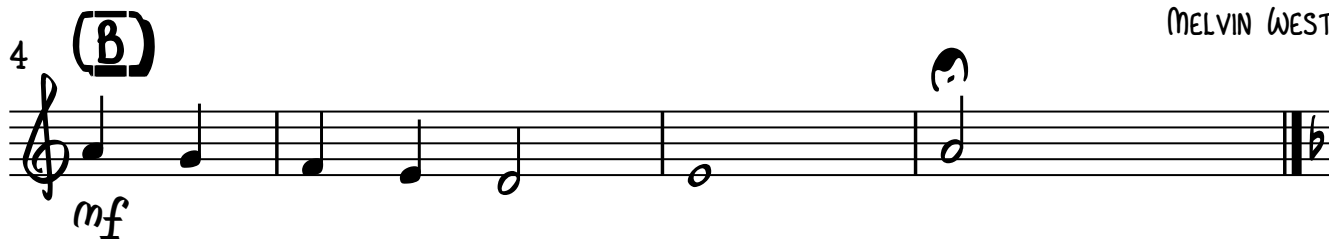
GRUPO INSTRUMENTAL PGM

ROBERT RAMSAY
ARR. DENIS NOGUEIRA

(A) REVERENTE = 80



MELVIN WEST



WALTER H. HALL



MELODIA TRADICIONAL DINAMARQUESA



AMÉNS (HASD 610)

GRUPO INSTRUMENTAL PGM

TRUMPET IN B \flat I

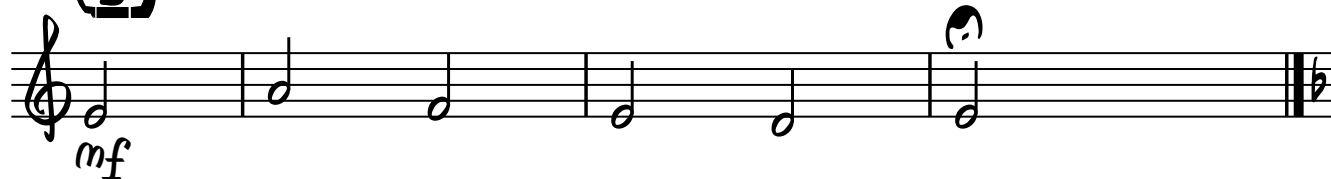
ROBERT RAMSAY
ARR. DENIS NOGUEIRA

(A) REVERENTE = 80



(B)

MELVIN WEST



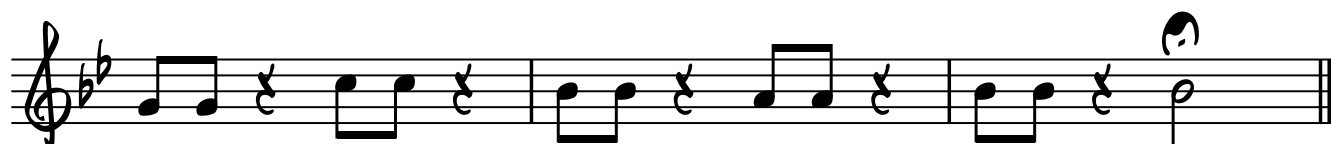
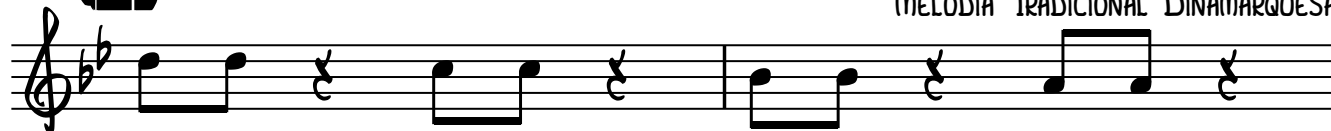
(C)

WALTER H. HALL



(D)

MELODIA TRADICIONAL DINAMARQUESA




AMÉNS (HASD 610)
GRUPO INSTRUMENTAL PGM

ROBERT RAMSAY
ARR. DENIS NOGUEIRA

(A) REVERENTE = 80



MELVIN WEST



(C)

WALTER H. HALL

[illegible]

MELODIA TRADICIONAL DINAMARQUESA

(MELODIA TRADICIONAL DINAMARQUESA)

The first staff of music is in treble clef with a key signature of two flats (Bb and Eb). It contains five measures of music. The first four measures each contain a pair of eighth notes followed by a quarter rest. The notes in the measures are: G4-A4, F4-G4, E4-F4, and D4-E4. The fifth measure contains a single half note G4. The staff ends with a double bar line.

AMÉNS (HASD 610)

TROMBONE

GRUPO INSTRUMENTAL PGM

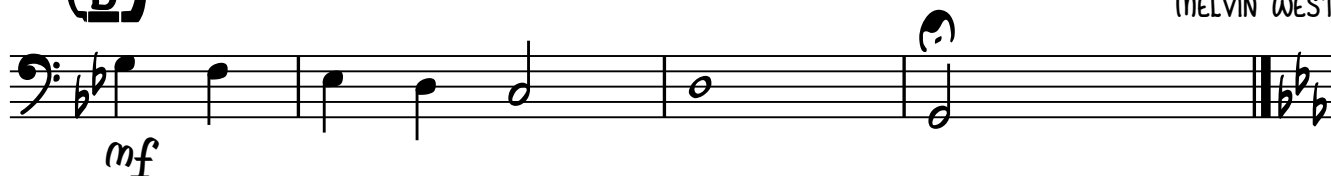
ROBERT RAMSAY
ARR. DENIS NOGUEIRA

(A) REVERENTE = 80



(B)

MELVIN WEST



(C)

WALTER H. HALL



(D)

MELODIA TRADICIONAL DINAMARQUESA



AMÉNS (HASD 610)

GRUPO INSTRUMENTAL PGM

BASE

REVERENTE = 80

ROBERT RAMSAY

ARR. DENIS NOGUEIRA

(A) B \flat C $_m$ 7(ADD13) D E \flat D G

(B) G $_m$ C $_m$ /E \flat C $_m$ 7 C $_m$ 7(ADD13) G $_m$ /D D $_m$ 7 G (MELVIN WEST)

(C) E \flat B \flat /D A \flat /C E \flat /G A \flat E \flat /G F7 B \flat E \flat (WALTER H. HALL)

(D) A \flat E \flat F $_m$ C $_m$ D \flat B \flat $_m$ A \flat /E \flat E \flat A \flat (MELODIA TRADICIONAL DINAMARQUESA)