

GRUPO INSTRUMENTAL PGM

ARR. DENIS NOGUEIRA

ALEGRE E ENTUSIASMO = 130

SOPRANO RECORDER I
 SOPRANO RECORDER II
 CLARINET IN B \flat I
 CLARINET IN B \flat II
 CLARINET IN B \flat III
 ALTO SAXOPHONE I
 ALTO SAXOPHONE II
 TENOR SAXOPHONE
 SOLO TRUMPET IN B \flat I
 TRUMPET IN B \flat II
 TROMBONE
 BASE

7

S. REC.

S. REC.

CL.

CL.

CL.

ALTO SAX.

ALTO SAX.

TEN. SAX.

TPT.

TPT.

TBN.

G⁹ B_m⁷ C D G C/D G C/D

CL.

CL.

CL.

ALTO SAX.

ALTO SAX.

TEN. SAX.

TPT.

TPT.

TBN.

G⁹ B_m⁷ C D G C/D G C/D

14

S. REC.

S. REC.

CL.

CL.

CL.

ALTO SAX.

ALTO SAX.

TÉN. SAX.

TPT.

TPT.

TBN.

CON SURDINA

mf

G⁹ D⁷ G⁹ G/B D C/D G⁹ C⁹ G⁹

14

S. REC.

S. REC.

CL.

CL.

CL.

ALTO SAX.

ALTO SAX.

TÉN. SAX.

TPT.

TPT.

TBN.

CON SURDINA

mf

G⁹ D⁷ G⁹ G/B D C/D G⁹ C⁹ G⁹

21

S. REC.

S. REC.

CL.

CL.

CL.

ALTO SAX.

ALTO SAX.

TEN. SAX.

TPT.

TPT.

TBN.

A7 A7/C# D C/D G⁹ D7 G⁹ G/B D C/D G⁹ C⁹ A_m/C

28

S. REC.

S. REC.

CL.

CL.

CL.

ALTO SAX.

ALTO SAX.

TEN. SAX.

TPT.

TPT.

TBN.

G/D D G/D D7 G⁹ G⁹ G/B D/A G D

mf

mf

mf

35

S. REC.

S. REC.

CL.

CL.

CL.

ALTO SAX.

ALTO SAX.

TEN. SAX.

TPT.

TPT.

TBN.

D7 G/B D7/A G9 G9 D7 G9 G/B D C/D

Detailed description of the musical score: The score is for a jazz ensemble. It consists of eight staves for woodwinds and reeds, and three staves for brass. The woodwinds and reeds (Soprano Recorder, Clarinet, Alto Saxophone, Tenor Saxophone) play a rhythmic pattern of eighth and sixteenth notes in the first two measures, then rest. The brass section (Trumpet, Trombone) plays a melodic line in the first two measures, then rests. The bottom staff shows the harmonic progression: D7, G/B, D7/A, G9, G9, D7, G9, G/B, D, C/D.

42

S. REC.

S. REC.

CL.

CL.

CL.

ALTO SAX.

ALTO SAX.

TEN. SAX.

mf

TPT.

TPT.

mf

TBN.

mf

G⁹ C⁹ A_m/C G/D D G/D D⁷ G⁹ G⁹ C/G G⁹

A DEUS DEMOS GLÓRIA (HARD 16)

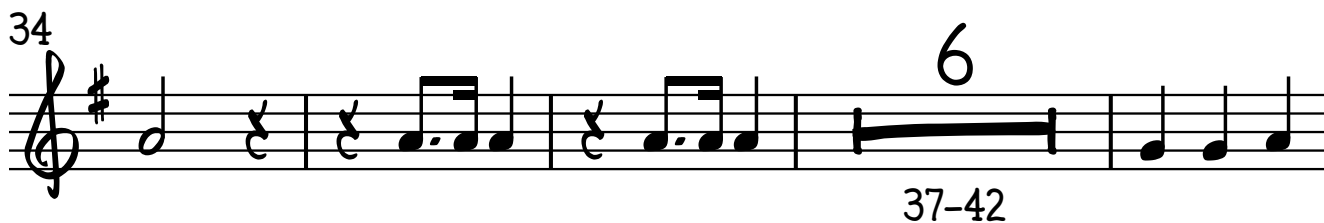
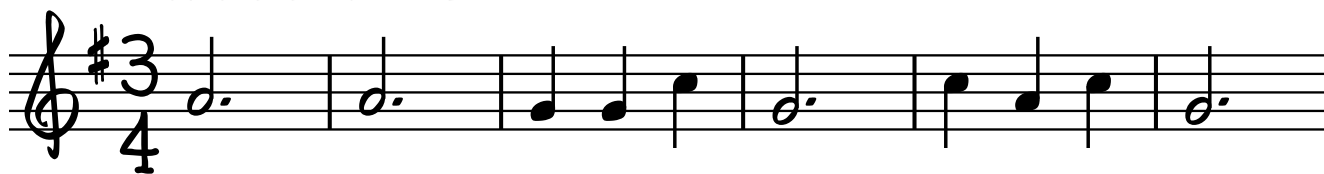
GRUPO INSTRUMENTAL PGM

SOPRANO RECORDER I

WILLIAM H. DOANE

ARR. DENIS NOGUEIRA

ALEGRE E ENTUSIASMO = 130



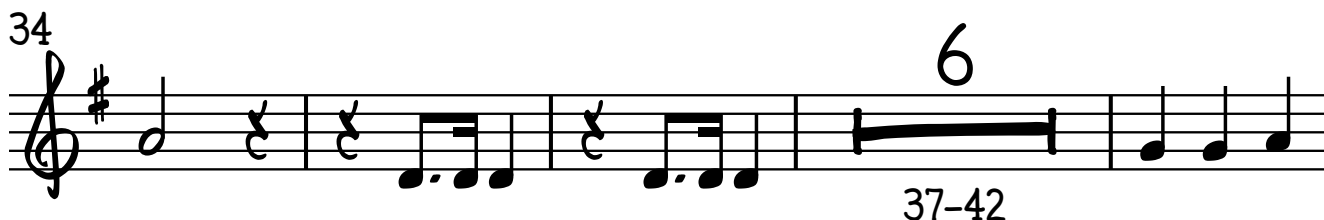
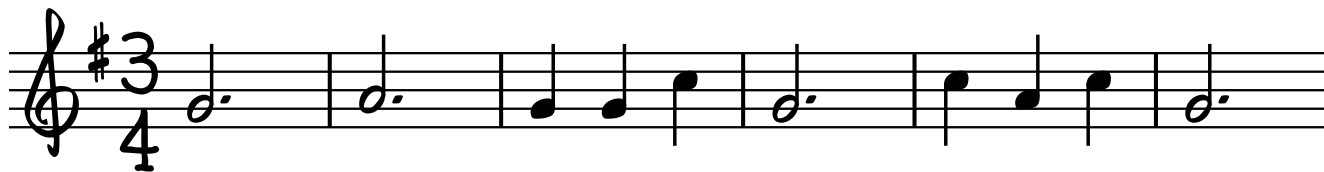
A DEUS DEMOS GLÓRIA (HARD 16)

GRUPO INSTRUMENTAL PGM

SOPRANO RECORDER II

WILLIAM H. DOANE
ARR. DENIS NOGUEIRA

ALEGRE E ENTUSIASMO = 130



A DEUS DEMOS GLÓRIA (HARD 16)

GRUPO INSTRUMENTAL PGM

CLARINET IN B \flat I

WILLIAM H. DOANE
ARR. DENIS NOGUEIRA

ALEGRE E ENTUSIASMO = 130



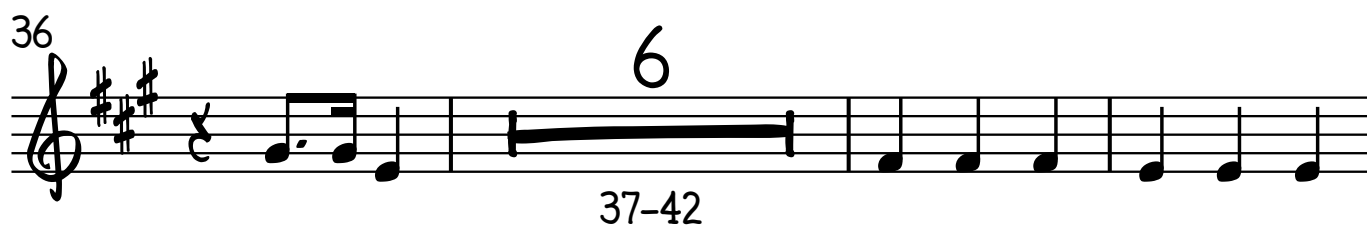
A DEUS DEMOS GLÓRIA (HASD 16)

GRUPO INSTRUMENTAL PGM

CLARINET IN B \flat II

WILLIAM H. DOANE
ARR. DENIS NOGUEIRA

ALEGRE E ENTUSIASMO = 130



A DEUS DEMOS GLÓRIA (HARD 16)

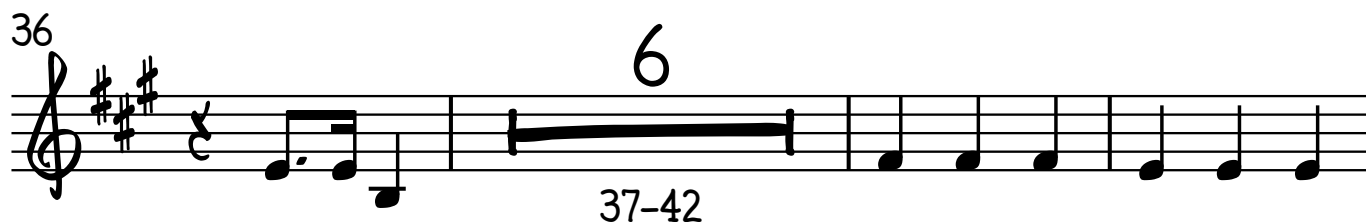
GRUPO INSTRUMENTAL PGM

CLARINET IN B \flat III

WILLIAM H. DOANE

ARR. DENIS NOGUEIRA

ALEGRE E ENTUSIASMO = 130



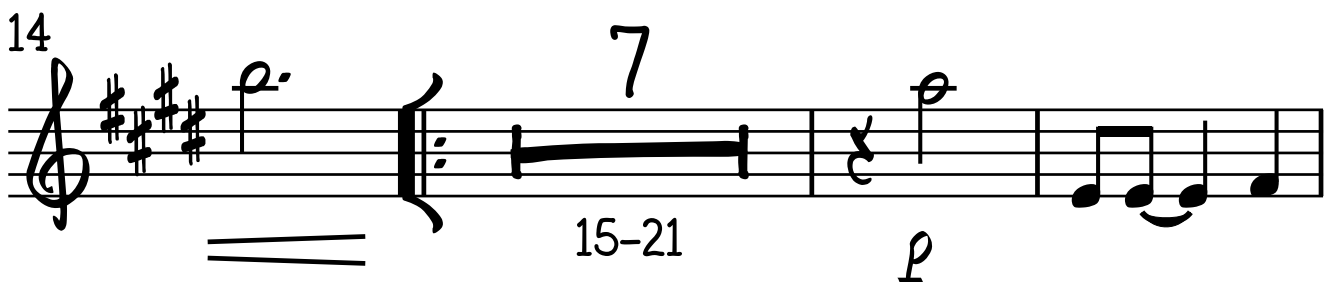
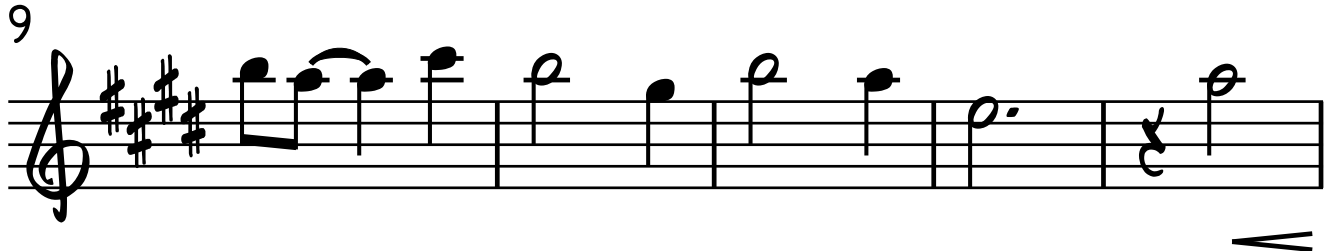
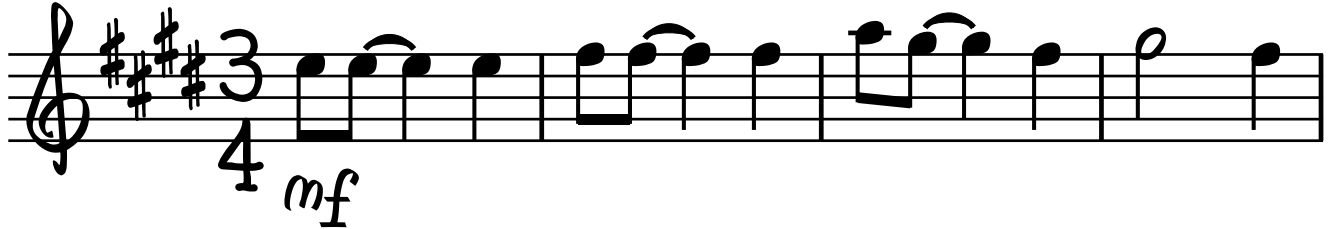
A DEUS DEMOS GLÓRIA (HASD 16)

GRUPO INSTRUMENTAL PGM

ALTO SAXOPHONE I

WILLIAM H. DOANE
ARR. DENIS NOGUEIRA

ALEGRE E ENTUSIASMO = 130

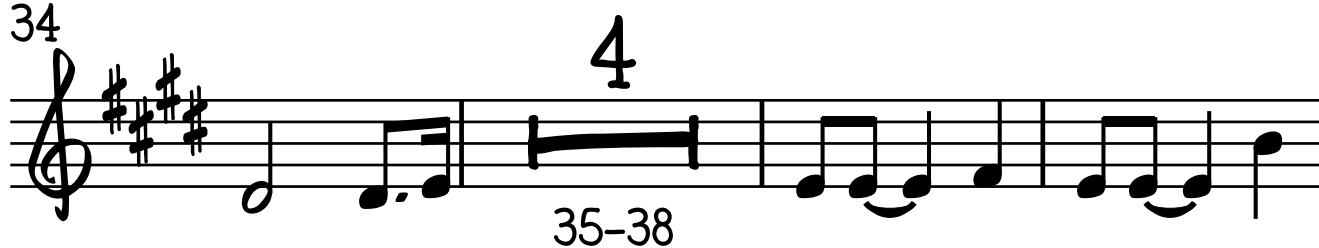


2³⁰

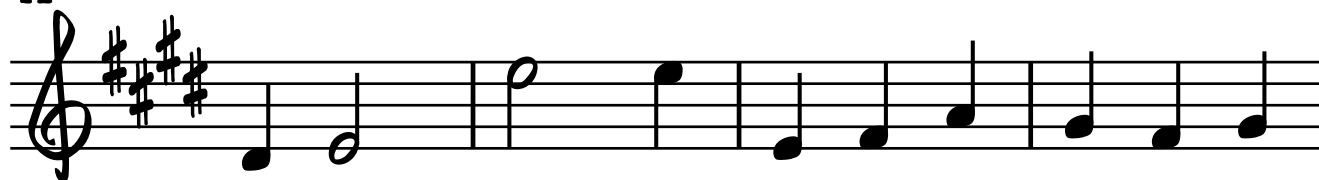
ALTO SAXOPHONE I



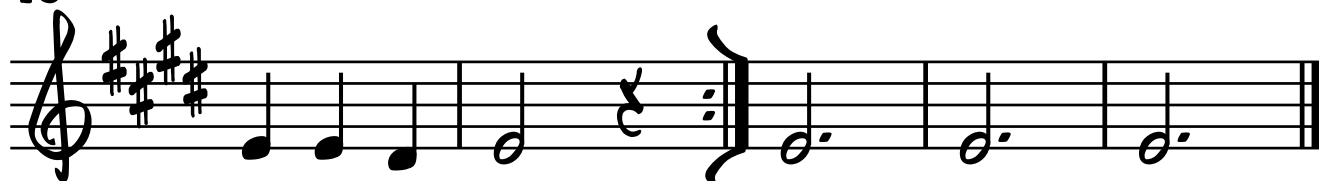
34



41



45



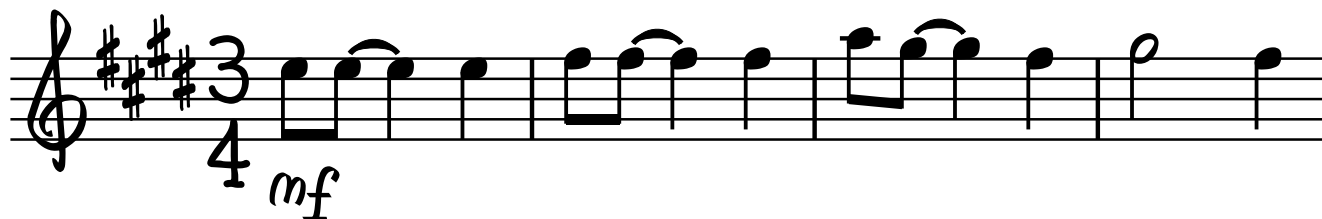
A DEUS DEMOS GLÓRIA (HARD 16)

GRUPO INSTRUMENTAL PGM

ALTO SAXOPHONE II

WILLIAM H. DOANE
ARR. DENIS NOGUEIRA

ALEGRE E ENTUSIASMO = 130



2³⁰ ALTO SAXOPHONE II

30

34

4

35-38

34

41

41

45

45

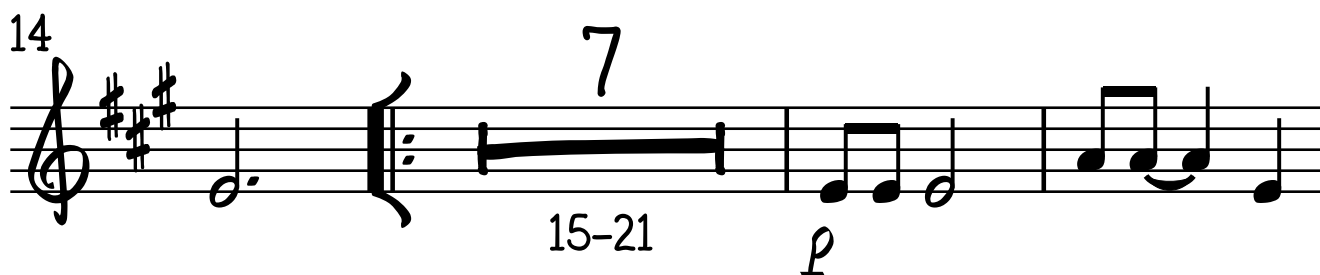
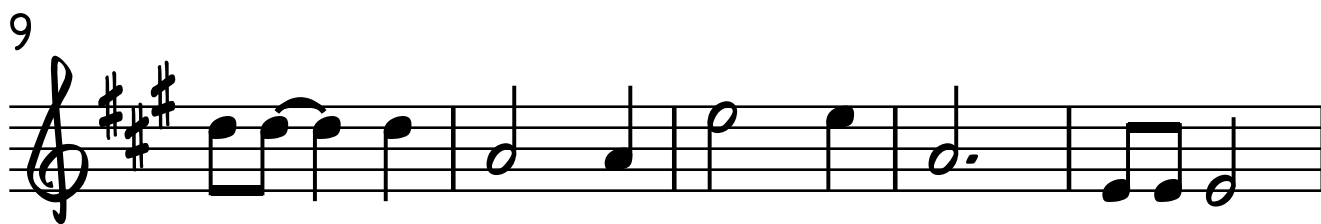
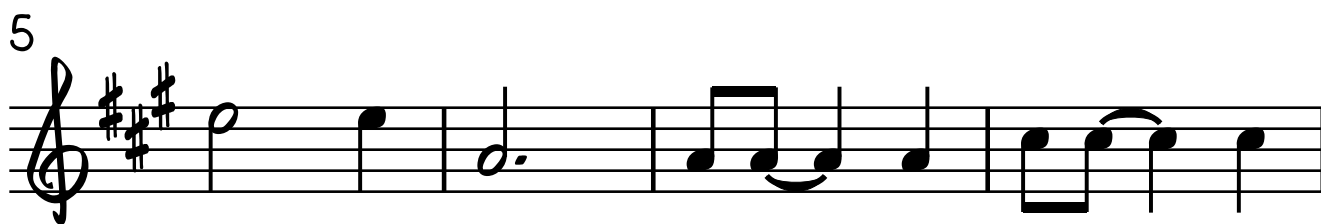
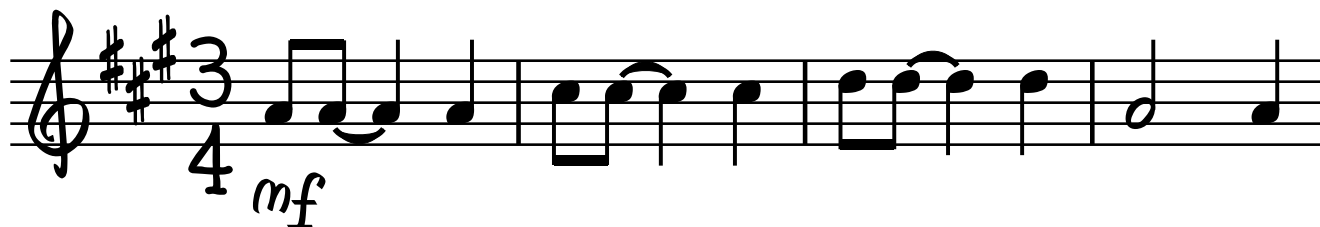
A DEUS DEMOS GLÓRIA (HARD 16)

GRUPO INSTRUMENTAL PGM

TENOR SAXOPHONE

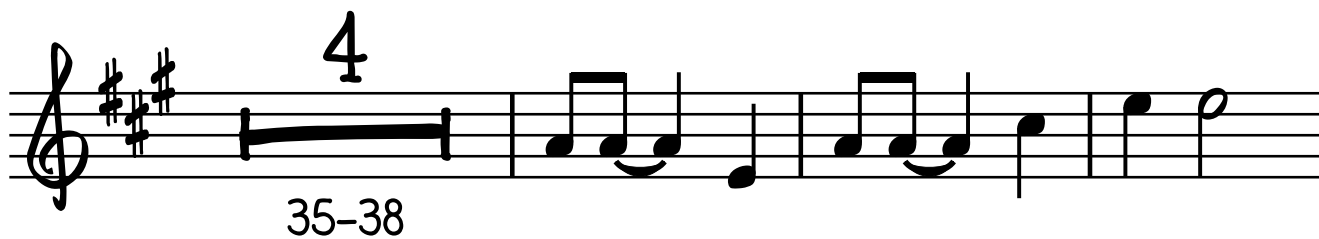
WILLIAM H. DOANE
ARR. DENIS NOGUEIRA

ALEGRE E ENTUSIASMO = 130



2³¹

TENOR SAXOPHONE



A DEUS DEMOS GLÓRIA (HARD 16)

GRUPO INSTRUMENTAL PGM

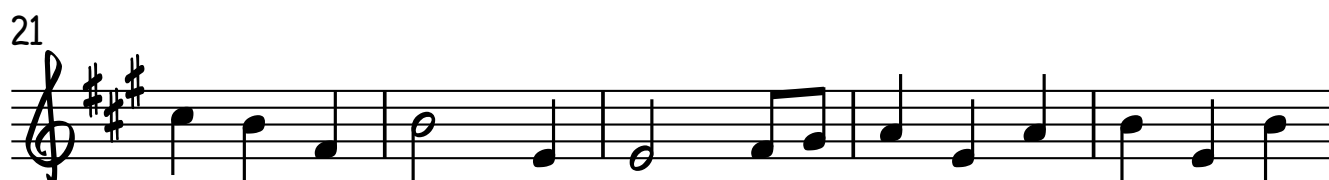
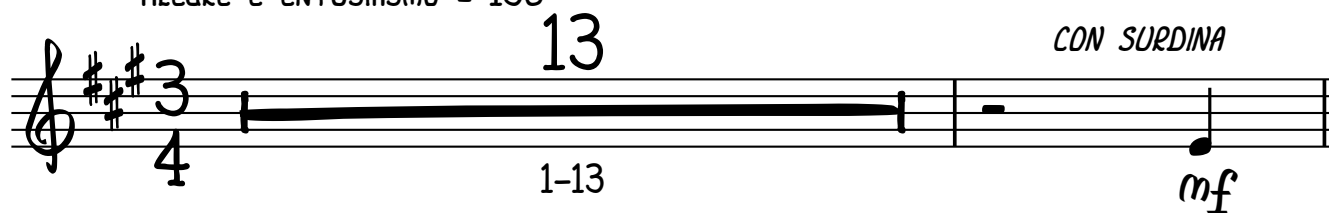
SOLO TRUMPET IN Bb I

ALEGRE E ENTUSIASMO = 130

WILLIAM H. DOANE

ARR. DENIS NOGUEIRA

CON SURDINA



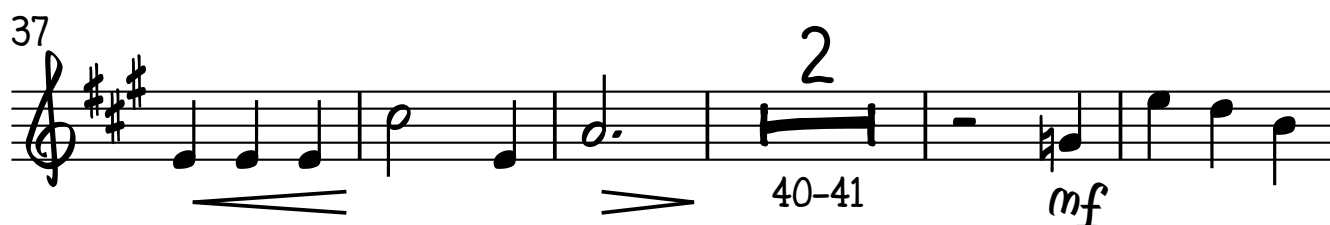
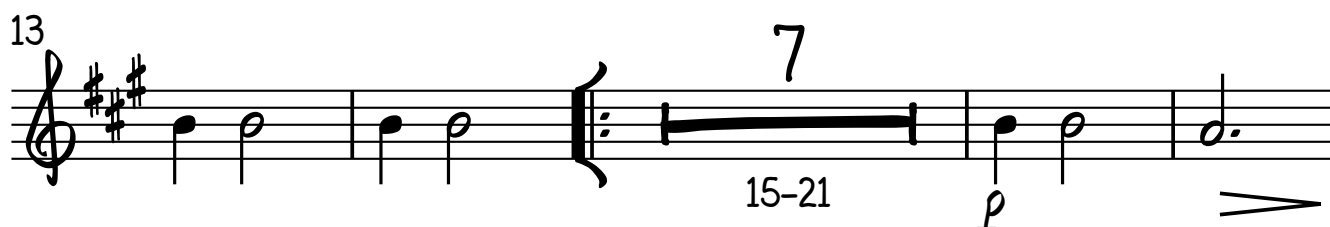
TRUMPET IN B \flat II

A DEUS DEMOS GLÓRIA (HARD 16)

GRUPO INSTRUMENTAL PGM

WILLIAM H. DOANE
ARR. DENIS NOGUEIRA

ALEGRE E ENTUSIASMO = 130



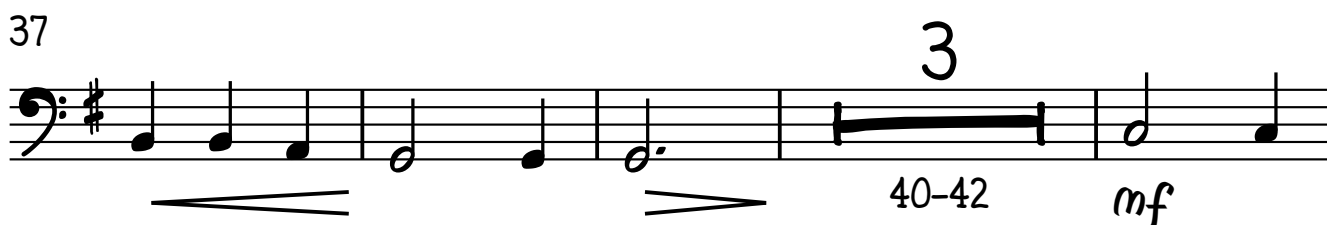
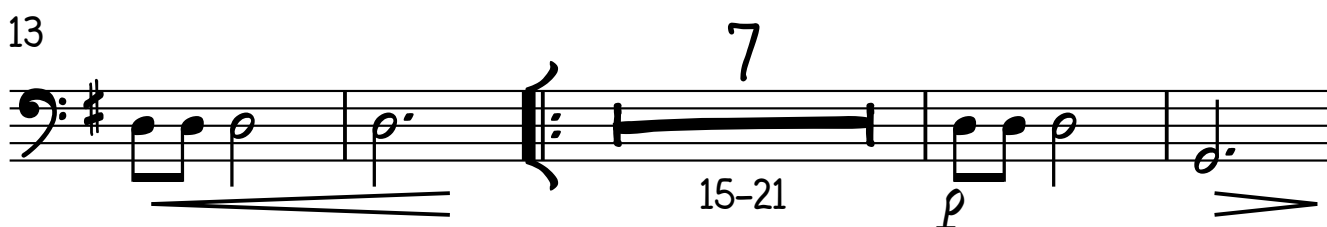
TROMBONE

A DEUS DEMOS GLÓRIA (HASD 16)

GRUPO INSTRUMENTAL PGM

WILLIAM H. DOANE
ARR. DENIS NOGUEIRA

ALEGRE E ENTUSIASMO = 130



A DEUS DEMOS GLÓRIA (HARD 16)

GRUPO INSTRUMENTAL PGM

BASE

WILLIAM H. DOANE

ARR. DENIS NOGUEIRA

ALEGRE E ENTUSIASMO = 130

Chord progression for the instrumental base:

Measures 1-4: G^9 B_m^7 C D G

Measures 5-8: C/D G G^9 B_m^7 C D

Measures 9-12: G C/D G C/D

Measures 13-16: G^9 D7 G^9 G/B D C/D G^9

Measures 17-20: C⁹ G^9 A7 A7/C# D C/D G^9 D7

Measures 21-24: G^9 G/B D C/D G^9 C⁹ A_m/C

The musical notation is written on a single staff in treble clef with a key signature of one sharp (F#) and a 3/4 time signature. The melody consists of eighth and quarter notes, often beamed together. The first measure starts with a mezzo-forte (mf) dynamic. The piece concludes with a double bar line at the end of measure 24.

BASE

28 G/D D G/D D⁷ G⁹

31 G⁹ G/B D/A G D

35 D⁷ G/B D⁷/A G⁹ G⁹ D⁷

40 G⁹ G/B D C/D G⁹ C⁹ A_m/C

44 G/D D G/D D⁷ G⁹

47 G⁹ C/G G⁹