

GRUPO INSTRUMENTAL PGM

ARR. DENIS NOGUEIRA

ALEGRE E ENTUSIASMO = 90

FLUTE TRANSVERSAL

SOPRANO RECORDER I

SOPRANO RECORDER II

CLARINET IN B \flat I

CLARINET IN B \flat II

CLARINET IN B \flat III

ALTO SAXOPHONE I

ALTO SAXOPHONE II

TENOR SAXOPHONE

TRUMPET IN B \flat I

TRUMPET IN B \flat II

TROMBONE

BASE

FL.

S. REC.

S. REC.

CL.

CL.

CL.

ALTO SAX.

ALTO SAX.

TEN. SAX.

TPT.

TPT.

TBN.

C^o D^o A⁷ F[#]m⁷ B^m7 E⁷ D/A

FL.

S. REC.

S. REC.

CL.

CL.

CL.

ALTO SAX.

ALTO SAX.

TEN. SAX.

TPT.

TPT.

TBN.

A

E

A⁹

D⁹/A

A⁹

12

(A)

FL.

S. REC.

S. REC.

CL.

CL.

CL.

ALTO SAX.

ALTO SAX.

TEN. SAX.

TPT.

TPT.

TBN.

16

A⁹ D/A A⁹

FL.

S. REC.

S. REC.

CL.

CL.

CL.

ALTO SAX.

ALTO SAX.

TEN. SAX.

TPT.

TPT.

TBN.

F#m7(ADD9) D9/F# Dm/F A/E D+7 Bm7 A/C#

24 1. 2. 28

FL.

S. REC.

S. REC.

CL.

CL.

CL.

ALTO SAX.

ALTO SAX.

TEN. SAX.

TPT.

TPT.

TBN.

D⁶ E⁷ E⁷ A A⁷(ADD9) G/A G/D A/C B_m⁷

32 36

FL.

S. REC.

S. REC.

CL.

CL.

CL.

ALTO SAX.

ALTO SAX.

TEN. SAX.

TPT.

TPT.

TBN.

E7(SUS4) D/E E7 A9 E7 D/A A9 G/A

FL.

S. REC.

S. REC.

CL.

CL.

CL.

ALTO SAX.

ALTO SAX.

TEN. SAX.

TPT.

TPT.

TBN.

f

f

f

f

G/D A/C# C° D#° A7 F#m7 Bm7 E7 D/A A

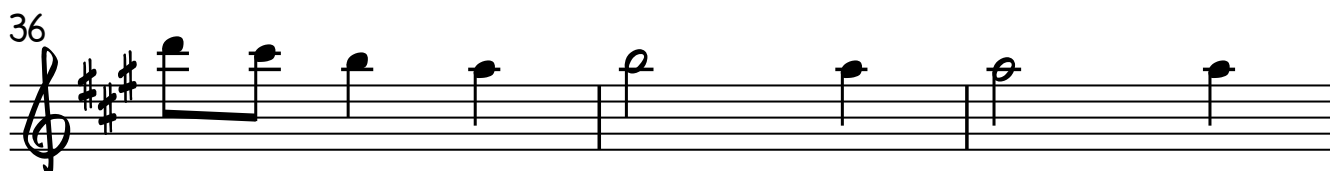
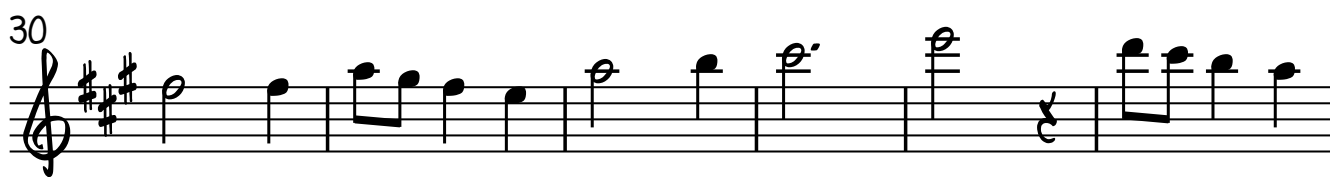
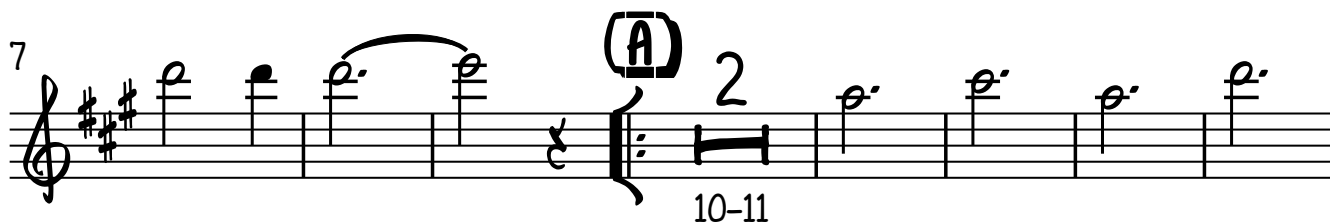
FLUTE TRANSVERSAL

ALÉM DO RIO (HARD 570)

GRUPO INSTRUMENTAL PGM

JADER SANTOS
ARR. DENIS NOGUEIRA

ALEGRE E ENTUSIASMO = 90



ALÉM DO RIO (HARD 570)

GRUPO INSTRUMENTAL PGM

SOPRANO RECORDER I

ALEGRE E ENTUSIASMO = 90

JADER SANTOS

ARR. DENIS NOGUEIRA

3 4 8

1-3

(A) 2 12 16

10-11

2 20

18-19

(B)

24 1. 2. 28

32

2 35-36

40

ALÉM DO RIO (HARD 570)

GRUPO INSTRUMENTAL PGM

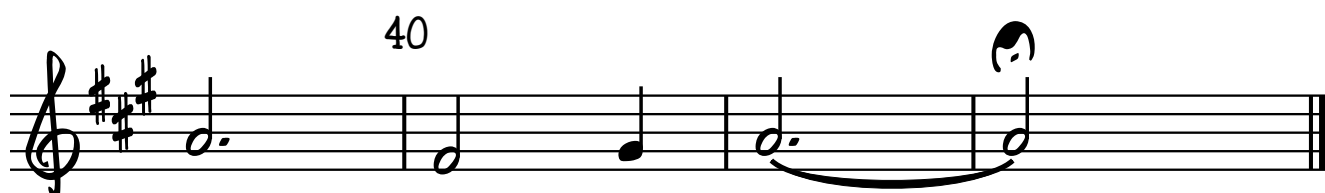
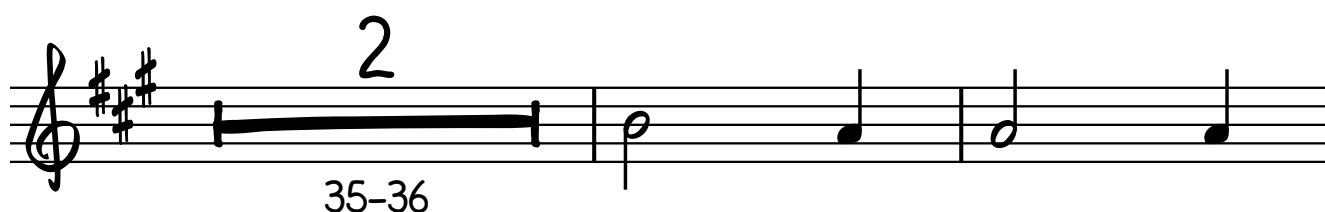
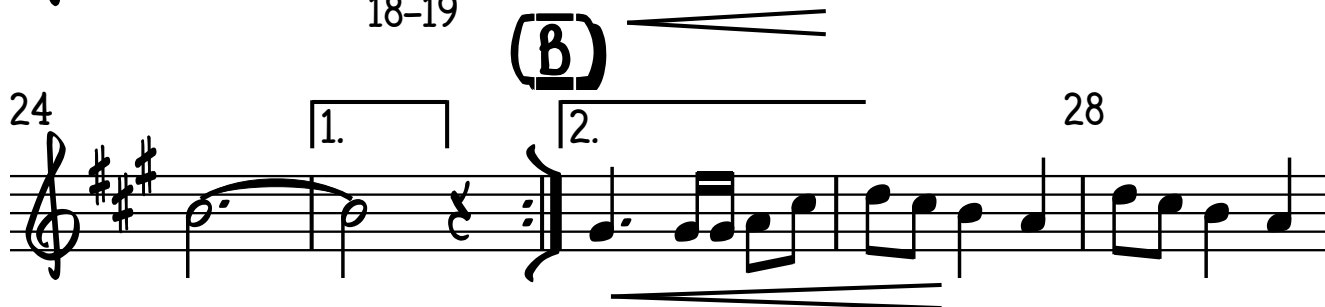
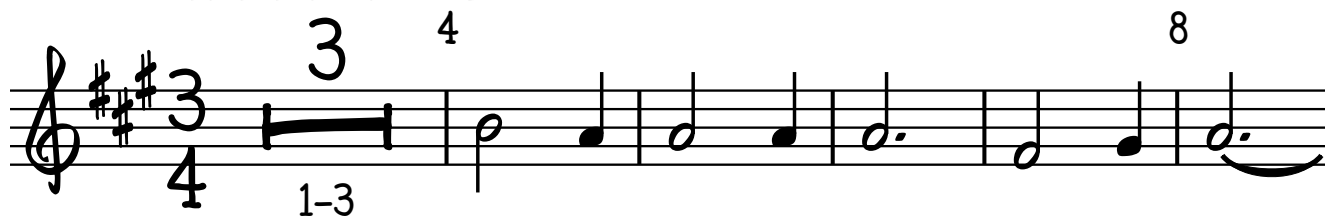
SOPRANO RECORDER II

ALEGRE E ENTUSIASMO = 90

JADER SANTOS

ARR. DENIS NOGUEIRA

8



ALÉM DO RIO (HARD 570)

GRUPO INSTRUMENTAL PGM

CLARINET IN B \flat I

ALEGRE E ENTUSIASMO = 90

JADER SANTOS

ARR. DENIS NOGUEIRA

3 4

1-3 f

8 (A) 12

16 2 20

18-19

24 1.

(B) 2.

28

32 2

35-36

40

ALÉM DO RIO (HARD 570)

GRUPO INSTRUMENTAL PGM

CLARINET IN B \flat II

ALEGRE E ENTUSIASMO = 90

JADER SANTOS
ARR. DENIS NOGUEIRA

3 4

1-3 *f*

8 (A) 12

16 2

18-19

20 24 1.

(B) 2.

28

32 2

35-36

40

ALÉM DO RIO (HARD 570)

GRUPO INSTRUMENTAL PGM

CLARINET IN B \flat III

JADER SANTOS

ARR. DENIS NOGUEIRA

ALEGRE E ENTUSIASMO = 90

3 4

1-3

f

(A)

12

16

2

18-19

20

24

1.

(B)

2.

28

32

2

35-36

40

ALÍM DO RIO (HASD 570)

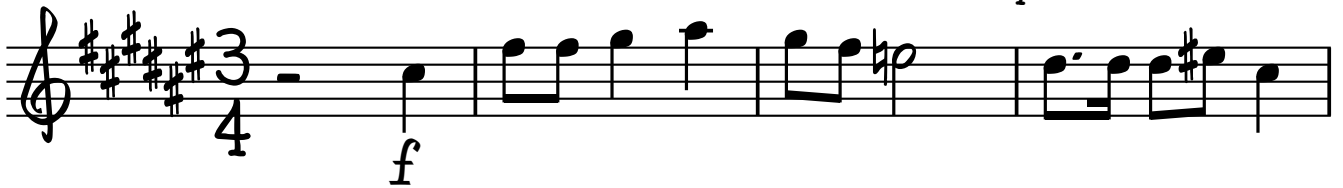
GRUPO INSTRUMENTAL PGM

ALTO SAXOPHONE I

JADER SANTOS
ARR. DENIS NOGUEIRA

ALEGRE E ENTUSIASMO = 90

4



8



(A)

12



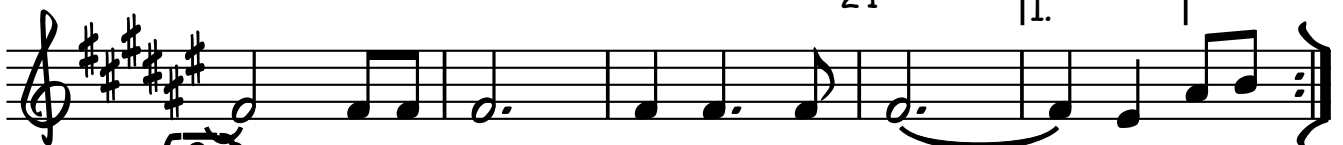
16

20



24

1.



(B)

28

2.

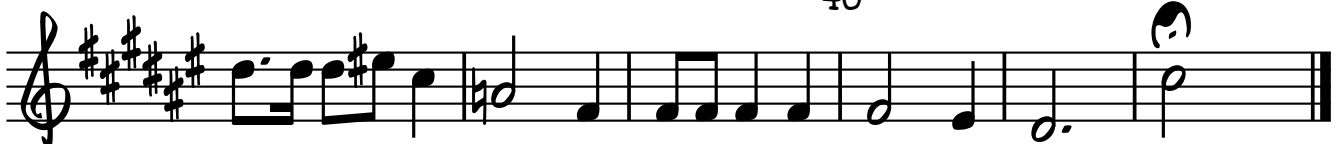


32

36



40



ALÉM DO RIO (HARD 570)

GRUPO INSTRUMENTAL PGM

ALTO SAXOPHONE II

JADER SANTOS
ARR. DENIS NOGUEIRA

ALEGRE E ENTUSIASMO = 90

4



8

(A)

12



16



20

24

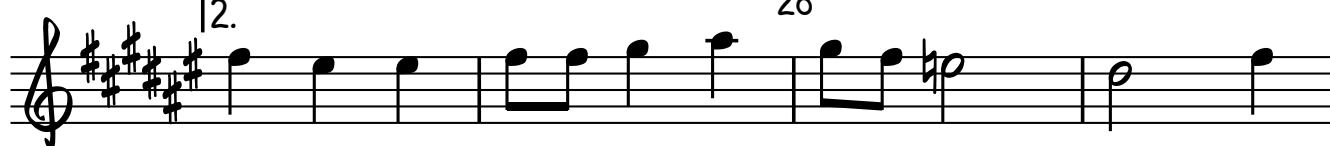
1.



(B)

2.

28



32



36



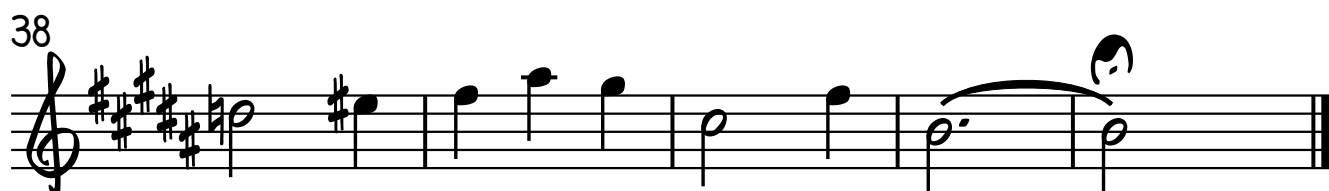
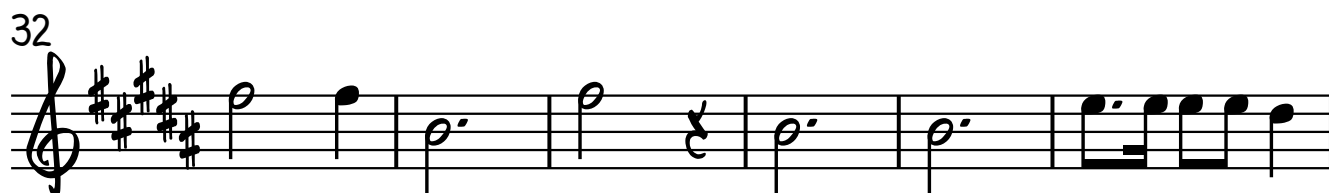
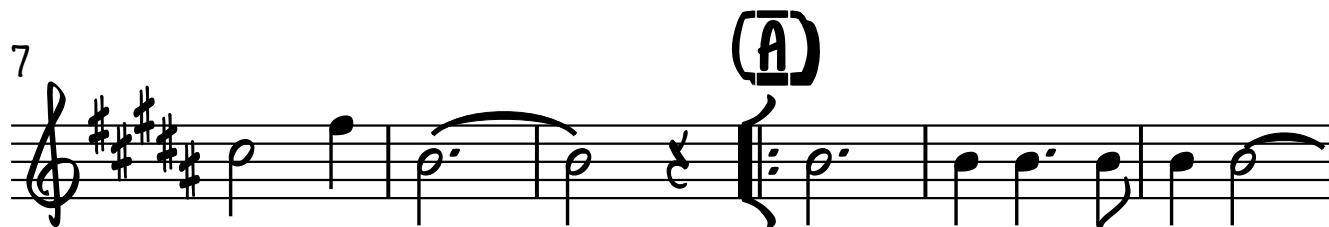
40



TENOR SAXOPHONE **ALÍM DO RIO (HARD 570)**
GRUPO INSTRUMENTAL PGM

JADER SANTOS
ARR. DENIS NOGUEIRA

ALEGRE E ENTUSIASMO = 90



ALÉM DO RIO (HASD 570)

GRUPO INSTRUMENTAL PGM

JADER SANTOS
ARR. DENIS NOGUEIRA

TRUMPET IN Bb I

ALEGRE E ENTUSIASMO = 90

4

The first staff of music is in treble clef, key of D major (three sharps: F#, C#, G#), and 3/4 time. It begins with a whole rest, followed by a half note D4, a quarter note E4, a half note F#4, a quarter note G#4, a half note A4, a quarter note B4, a half note C5, and a quarter note D5. The staff concludes with a double bar line.

[illegible]

ALÉM DO RIO (HASD 570)

GRUPO INSTRUMENTAL PGM

JADER SANTOS
ARR. DENIS NOGUEIRA

ALEGRE E ENTUSIASMO = 90

4

The first staff of music is in treble clef with a key signature of three sharps (F#, C#, G#). The time signature is 3/4. The melody begins with a whole rest, followed by a quarter note G4, an eighth note F#4, a quarter note E4, a quarter note D4, an eighth note C#4, a quarter note B3, a half note A3, a quarter note G#3, a half note F#3, and a quarter note E3.

A musical staff with a treble clef. The key signature has two sharps (F# and C#). The chord consists of the notes G, B, and D. Above the staff, there is a circled 'B' and the number '7'. Below the staff, the range '26-32' is indicated.

36

The first staff of music, measures 36-40. It begins with a treble clef and a key signature of four sharps (F#, C#, G#, D#). Measure 36 contains a whole rest. Measure 37 contains a half note D5. Measure 38 contains a quarter note E5, a quarter note F#5, a quarter note G#5, and a quarter note A5. Measure 39 contains a quarter note B5, a quarter note C6, a quarter note D6, and a quarter note E6. Measure 40 contains a quarter note F#6, a quarter note G#6, a quarter note A6, and a quarter note B6.

TROMBONE

ALÉM DO RIO (HARD 570)
GRUPO INSTRUMENTAL PGM

JADER SANTOS
ARR. DENIS NOGUEIRA

ALEGRE E ENTUSIASMO = 90

4

Musical score for "The Rose Tree" in bass clef, 3/4 time, key of D major (two sharps). The score includes measures 1 through 40, with first and second endings. Dynamics include forte (f).

Measure 1: Rest, then quarter note D (f).
 Measure 2: Quarter note E, quarter note F#.
 Measure 3: Quarter note G, quarter note A.
 Measure 4: Quarter note B, quarter note C#.
 Measure 5: Quarter note D, quarter note E.
 Measure 6: Quarter note F#, quarter note G.
 Measure 7: Quarter note A, quarter note B.
 Measure 8: Quarter note C#, quarter note D.

Measure 9: Quarter note D, quarter note E.
 Measure 10: Quarter note F#, quarter note G.
 Measure 11: Quarter note A, quarter note B.
 Measure 12: Quarter note C#, quarter note D.

Measure 13: Quarter note D, quarter note E.
 Measure 14: Quarter note F#, quarter note G.
 Measure 15: Quarter note A, quarter note B.
 Measure 16: Quarter note C#, quarter note D.

Measure 17: Quarter note D, quarter note E.
 Measure 18: Quarter note F#, quarter note G.
 Measure 19: Quarter note A, quarter note B.
 Measure 20: Quarter note C#, quarter note D.

Measure 21: Quarter note D, quarter note E.
 Measure 22: Quarter note F#, quarter note G.
 Measure 23: Quarter note A, quarter note B.
 Measure 24: Quarter note C#, quarter note D.

Measure 25: Quarter note D, quarter note E.
 Measure 26: Quarter note F#, quarter note G.
 Measure 27: Quarter note A, quarter note B.
 Measure 28: Quarter note C#, quarter note D.

Measure 29: Quarter note D, quarter note E.
 Measure 30: Quarter note F#, quarter note G.
 Measure 31: Quarter note A, quarter note B.
 Measure 32: Quarter note C#, quarter note D.

Measure 33: Quarter note D, quarter note E.
 Measure 34: Quarter note F#, quarter note G.
 Measure 35: Quarter note A, quarter note B.
 Measure 36: Quarter note C#, quarter note D.

Measure 37: Quarter note D, quarter note E.
 Measure 38: Quarter note F#, quarter note G.
 Measure 39: Quarter note A, quarter note B.
 Measure 40: Quarter note C#, quarter note D.

ALÉM DO RIO (HARD 570)

GRUPO INSTRUMENTAL PGM JADER SANTOS

ARR. DENIS NOGUEIRA

BASE

E D/A A⁹ G/A G/D A/C#

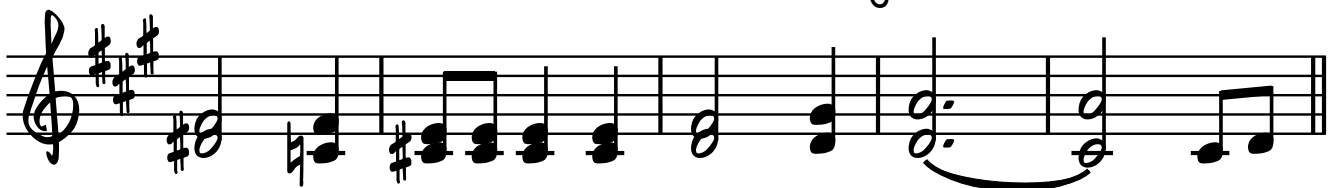
ALEGRE E ENTUSIASMO = 90

4



C^o D#^o A7 F#m7 Bm7 E7 D/A A E

8



A⁹ (A)

D⁹/A

12 A⁹



A⁹

D/A

16 A⁹



F#m7(ADD9) D⁹/F#

Dm/F

A/E

D+7

20



V.S.

2 BASE

B_m⁷ A/C[#] D⁶ E⁷

24

E⁷ (B) A A⁷(ADD9) G/A G/D A/C B_m⁷

28

2.

E⁷(SUS4) D/E E⁷ A⁹ E⁷ D/A A⁹

32

36 G/A G/D A/C[#] C^o D^{#o}

A⁷ F^{#m}⁷ B_m⁷ E⁷ D/A A

40