

GRUPO INSTRUMENTAL PGM

ARR. DENIS NOGUEIRA

4

8

C C/E C F/C C F/G G C Ab C/G Am C/G F/G C

(A)

FL.

S. REC.

S. REC.

CL.

CL.

CL.

ALTO SAX.

ALTO SAX.

TEN. SAX.

TPT.

TPT.

TBN.

mf

12

16

C F C G C C/E F C Am D⁷ G

20 24

FL. *mf*

S. REC. *mf*

S. REC. *mf*

CL. *mf*

CL. *mf*

CL. *mf*

ALTO SAX. *mf*

ALTO SAX. *mf*

TEN. SAX. *mf*

TPT. *mf*

TPT. *mf*

TBN. *mf*

C C/E C F/C C F/G G C Ab C/G Am C/G F/G C

FL.

S. REC.

S. REC.

CL.

CL.

CL.

ALTO SAX.

ALTO SAX.

TEN. SAX.

TRP.

TRP.

TBN.

C F C G C C/E F C Am D7 G C

36 40

FL.

S. REC.

S. REC.

CL.

CL.

CL.

ALTO SAX.

ALTO SAX.

TEN. SAX.

TPT.

TPT.

TBN.

C/E C F/C C F/G G C Ab C/G Am C/G F/G C

44 **(C)** 48

FL. *mf*

S. REC. *mf*

S. REC. *mf*

CL. *mf*

CL. *mf*

CL. *mf*

ALTO SAX. *mf*

ALTO SAX. *mf*

TEN. SAX. *mf*

TPT. *mf*

TPT. *mf*

TBN. *mf*

C F C G C C/E F C Am D7 G

52 56 60

FL. *mf*

S. REC. *mf*

S. REC. *mf*

CL. *mf*

CL. *mf*

CL. *mf*

ALTO SAX. *mf*

ALTO SAX. *mf*

TEN. SAX. *mf*

TPT. *mf*

TPT. *mf*

TBN. *mf*

C C/E C F/C C F/G G C Ab C/G Am C/G F/G C

0 ADORAI O SENHOR (HASD 02)

GRUPO INSTRUMENTAL PGM

EDWIN BARNES

FLUTE TRASNVERSAL

ARR. DENIS NOGUEIRA

ALEGRE E ENTUSIASMO = 114

5

[illegible]

15

mf

This block shows measures 15 through 18 of the song. Measure 15 begins with a treble clef and a key signature of one flat (B-flat). The melody consists of quarter notes: G4, A4, B-flat4, A4, and G4. Measure 16 continues with quarter notes: F4, E4, D4, C4, and B3. Measure 17 contains a half note G3 and a half note F3. Measure 18 concludes with a half note E3 and a half note D3. The dynamic marking 'mf' (mezzo-forte) is placed below the staff at the start of measure 17.

20


20

25

(B)

mf

30



2³⁵ FLUTE TRANSVERSAL

mf

39

44 (C)

mf

49

mf

54

57

0 ADORAI O SENHOR (HASD 02)

GRUPO INSTRUMENTAL PGM

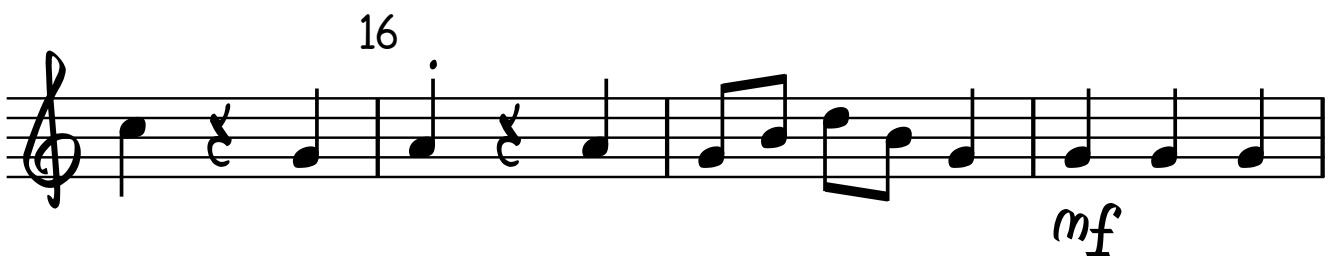
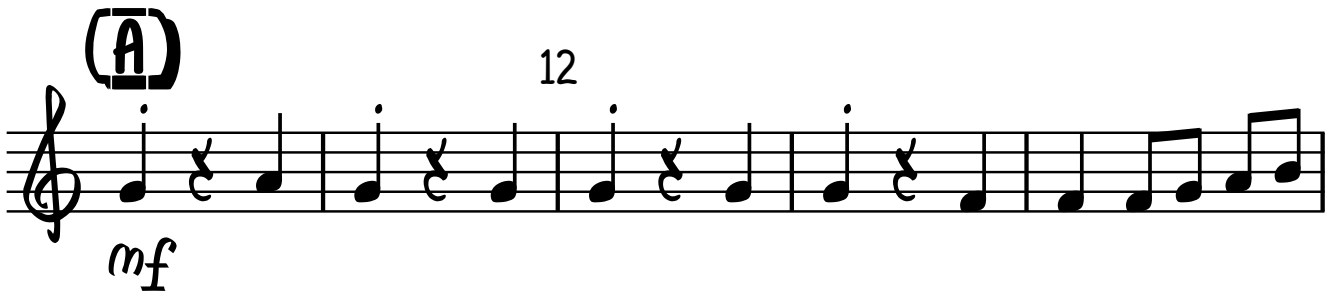
EDWIN BARNES

SOPRANO RECORDER I

ARR. DENIS NOGUEIRA

ALEGRE E ENTUSIASMO = 114

4

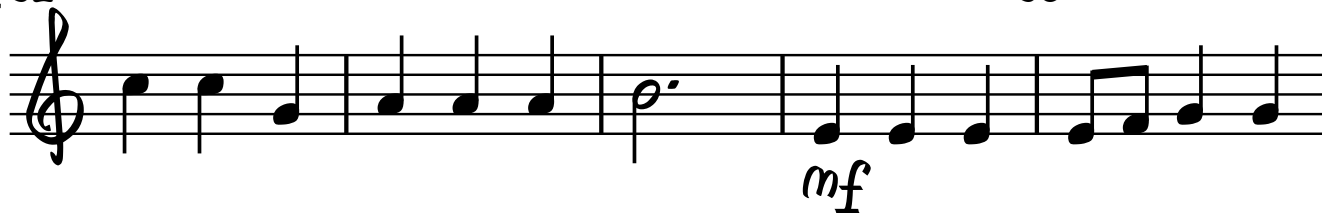


V.S.

SOPRANO RECORDER I

 2^{32}

36

 m_f

40



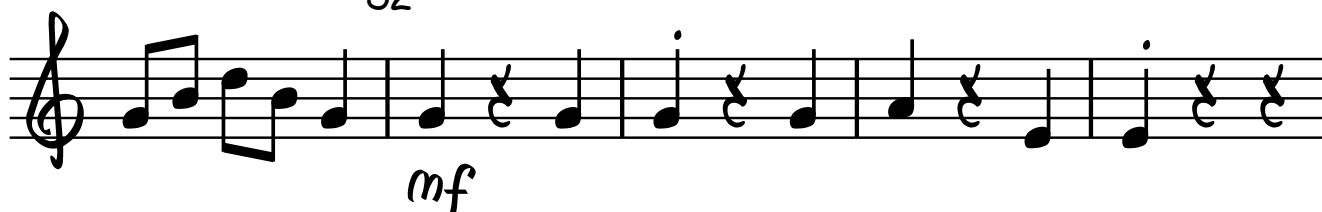
44 (C)

 m_f

48



52

 m_f

56

60



0 ADORAI O SENHOR (HASD 02)

GRUPO INSTRUMENTAL PGM

EDWIN BARNES

SOPRANO RECORDER II

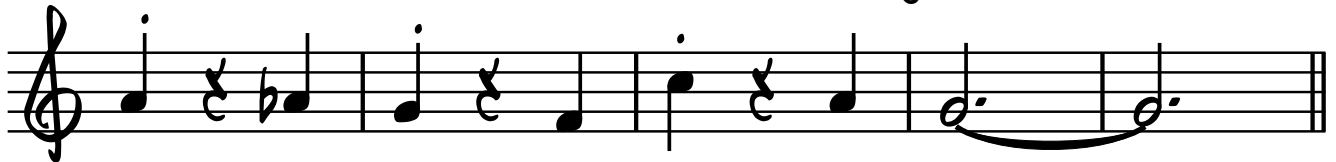
ARR. DENIS NOGUEIRA

ALEGRE E ENTUSIASMO = 114

4



8

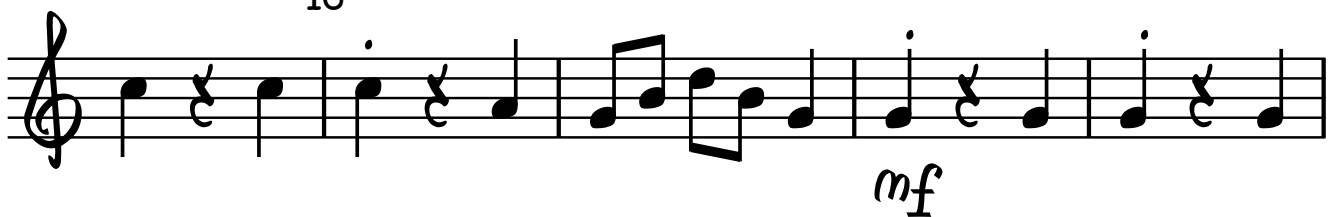


(A)

12



16



20

24



(B)

28



32



V.S.

SOPRANO RECORDER II

2

36

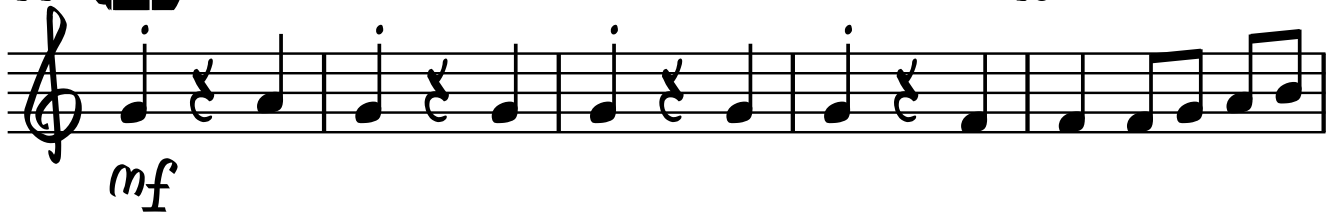


40

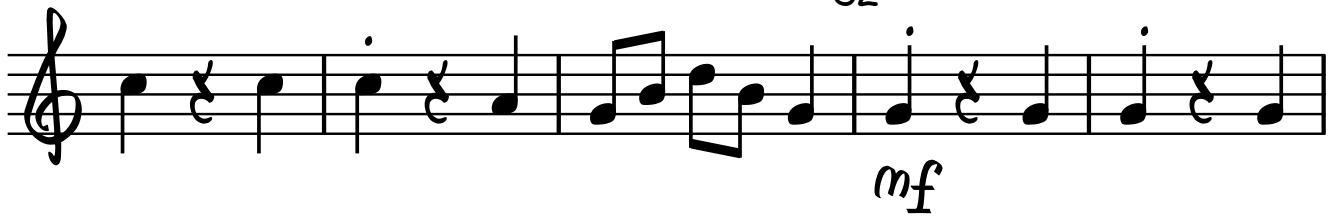


44 (C)

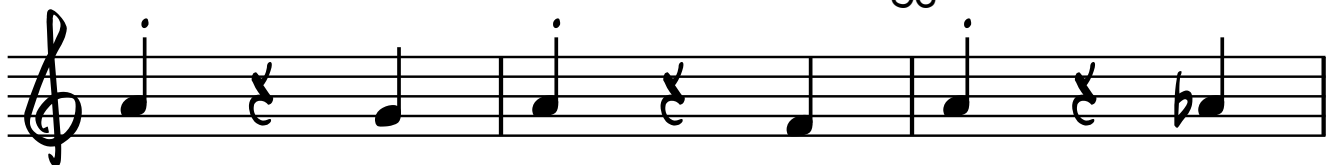
48



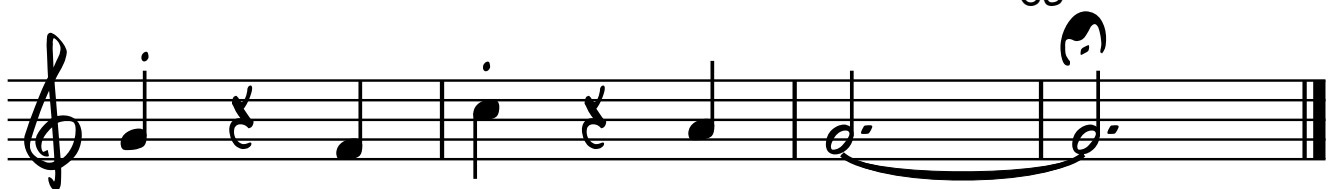
52



56



60



0 ADORAI O SENHOR (HARD 02)

GRUPO INSTRUMENTAL PGM

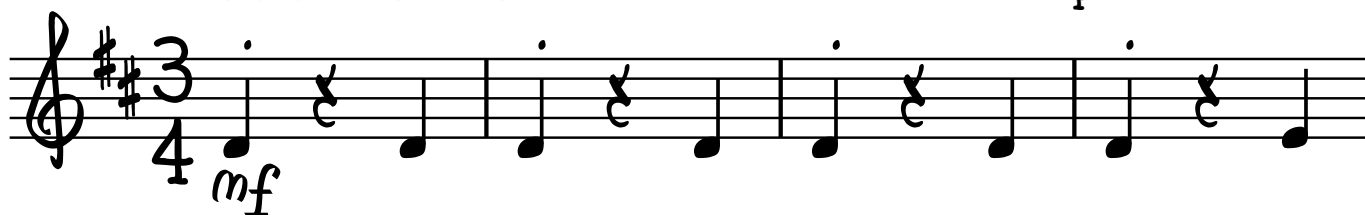
CLARINET IN B \flat I

EDWIN BARNES

ARR. DENIS NOGUEIRA

ALEGRE E ENTUSIASMO = 114

4



8

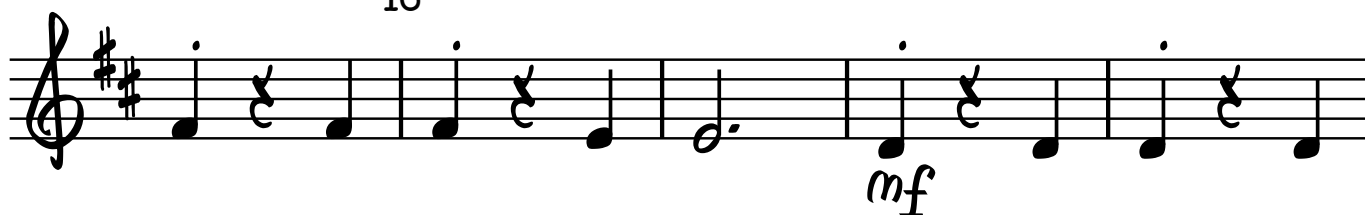


(A)

12

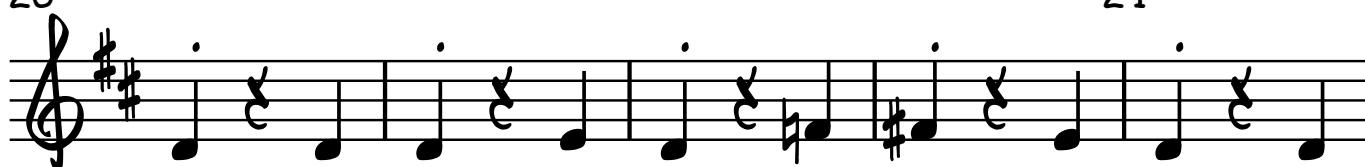


16



20

24



(B)

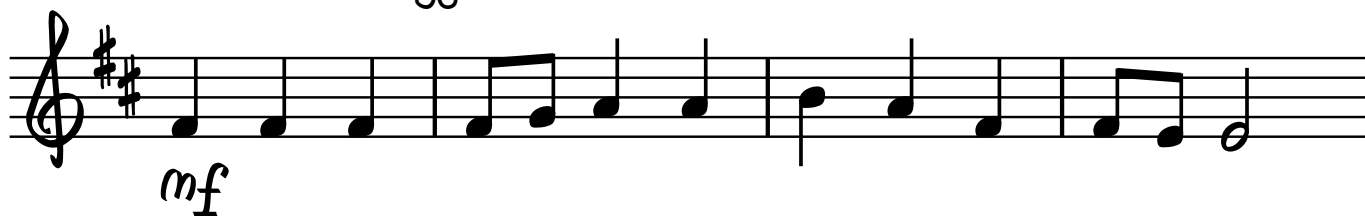
28



2

CLARINET IN B \flat I

36



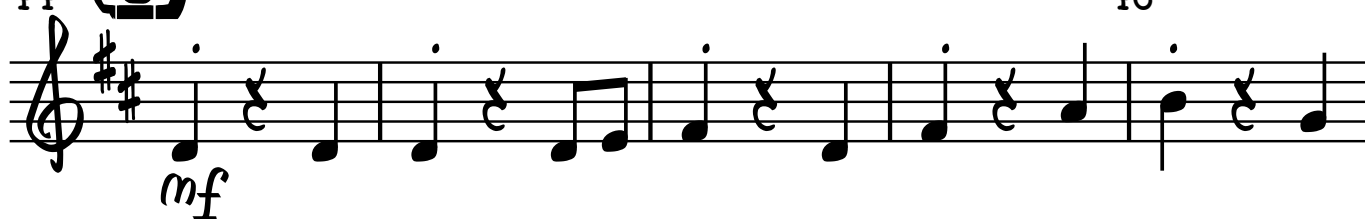
40



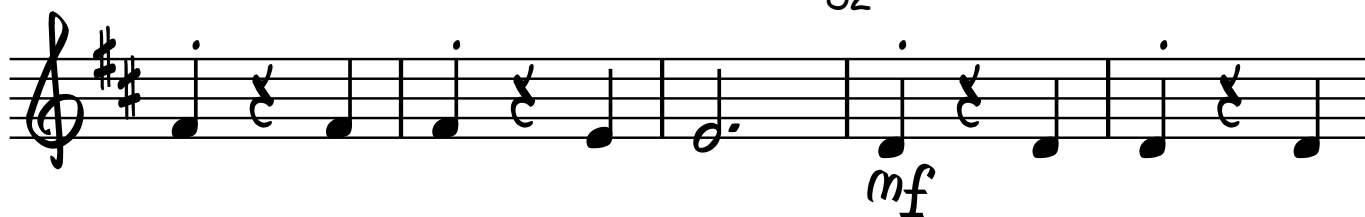
44



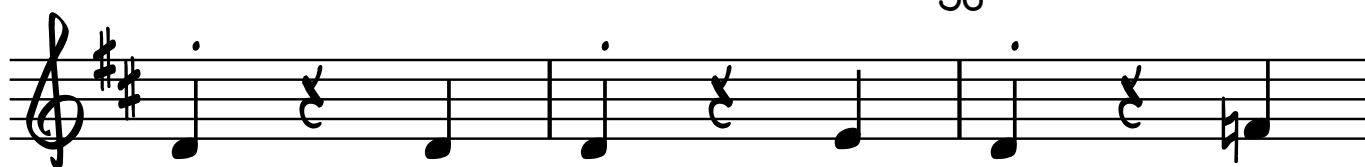
48



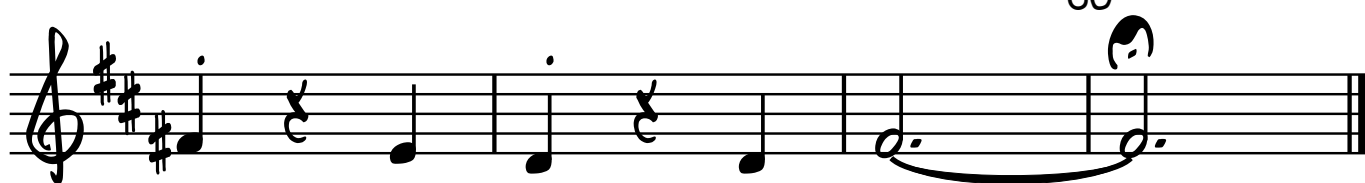
52



56



60



O ADORAI O SENHOR (HASD 02)

GRUPO INSTRUMENTAL PGM

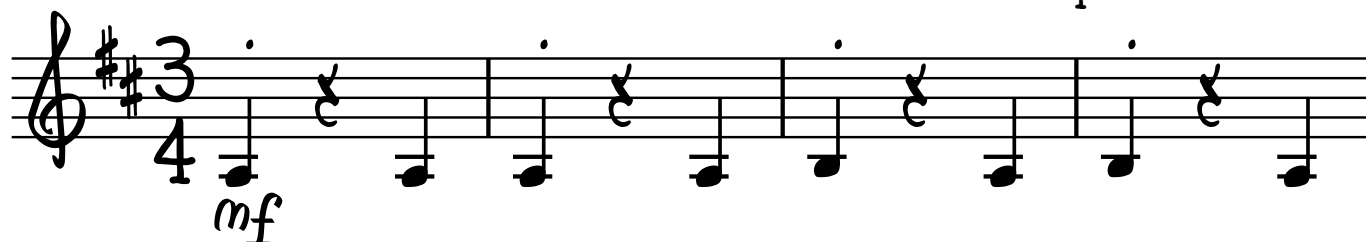
CLARINET IN Bb II

EDWIN BARNES

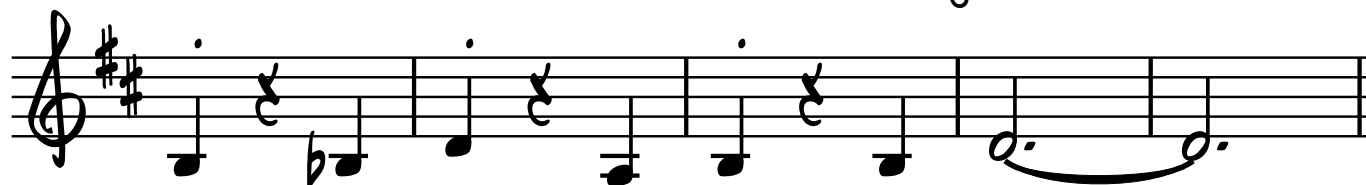
ARR. DENIS NOGUEIRA

ALEGRE E ENTUSIASMO = 114

4



8



(A)

12

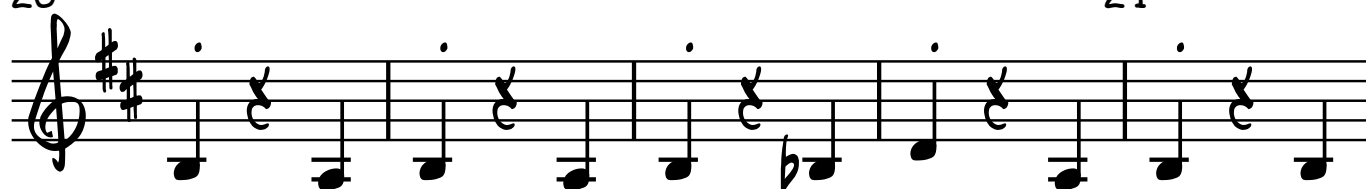


16



20

24



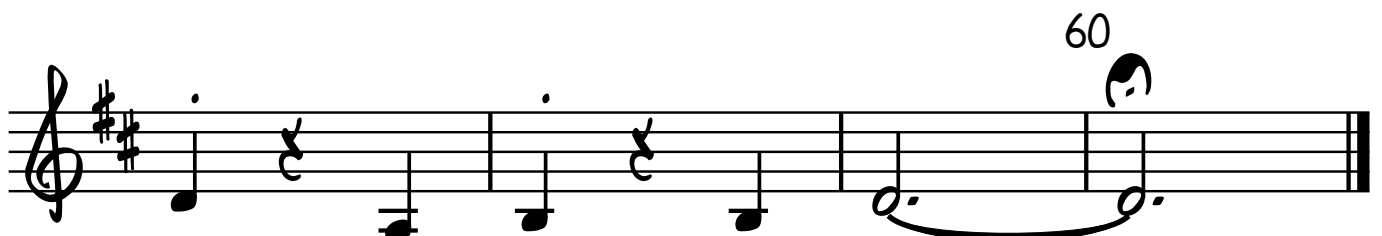
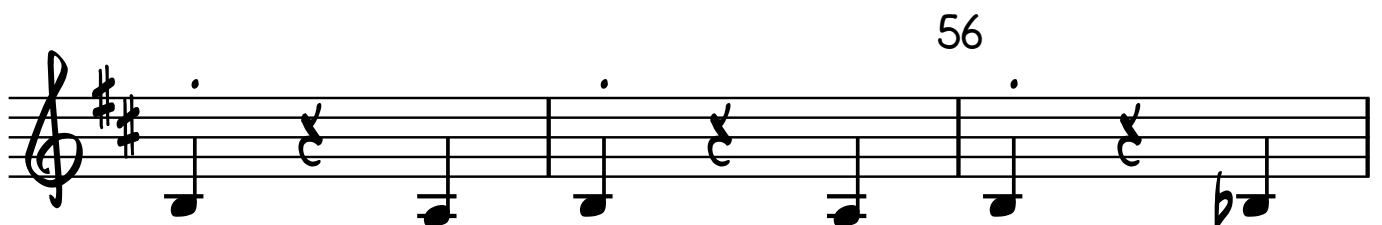
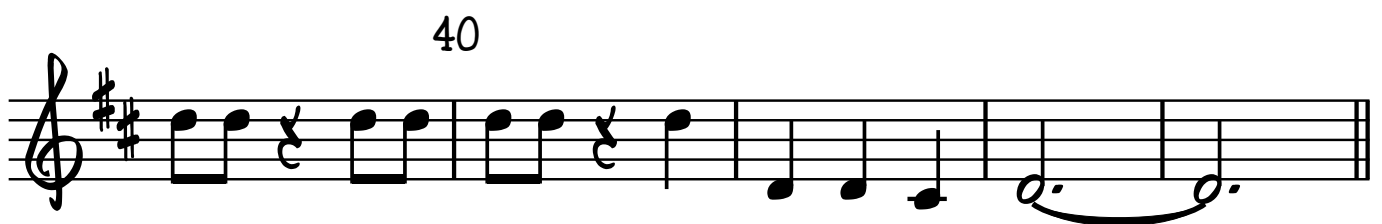
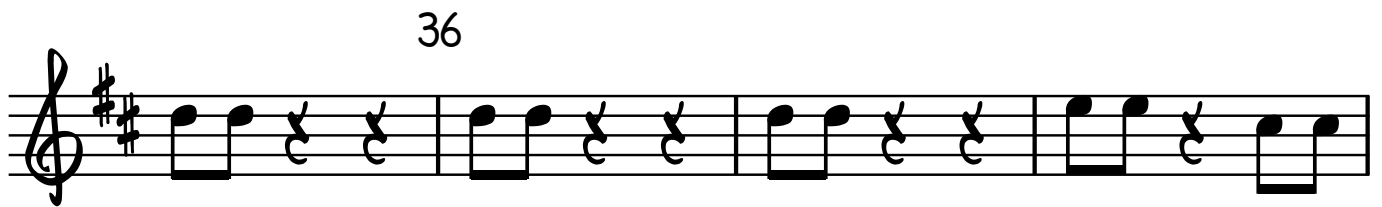
(B)

28



V.S.

CLARINET IN B \flat II



0 ADORAI O SENHOR (HASD 02)

GRUPO INSTRUMENTAL PGM

CLARINET IN B \flat III

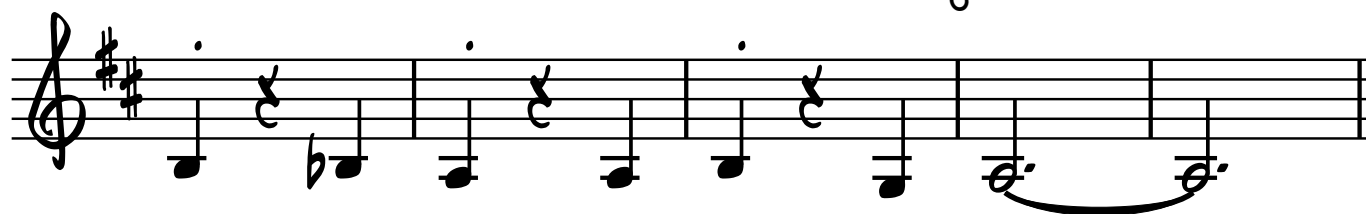
EDWIN BARNES
ARR. DENIS NOGUEIRA

ALEGRE E ENTUSIASMO = 114

4



8

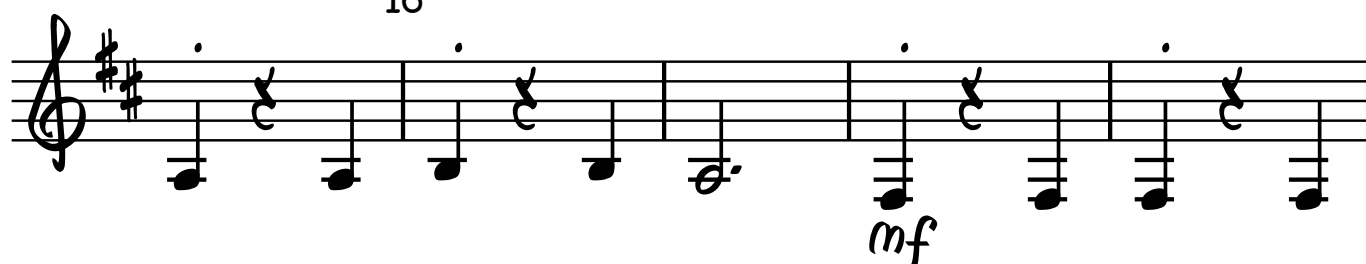


(A)

12

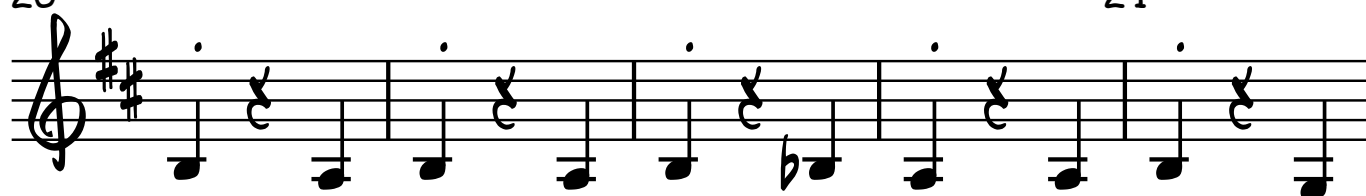


16



20

24



(B)

28

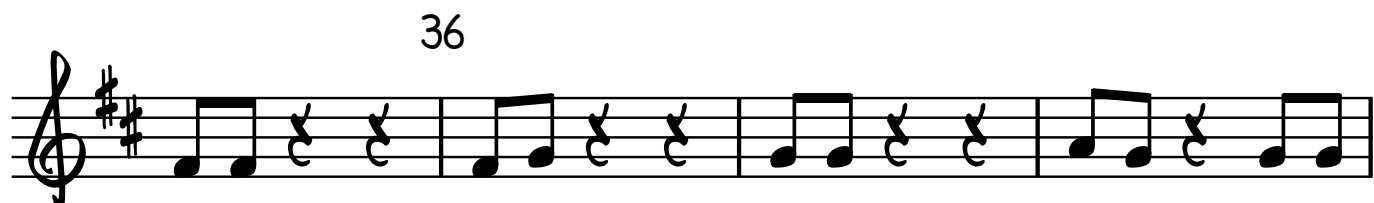


V.S.

2 CLARINET IN B \flat III



36



40



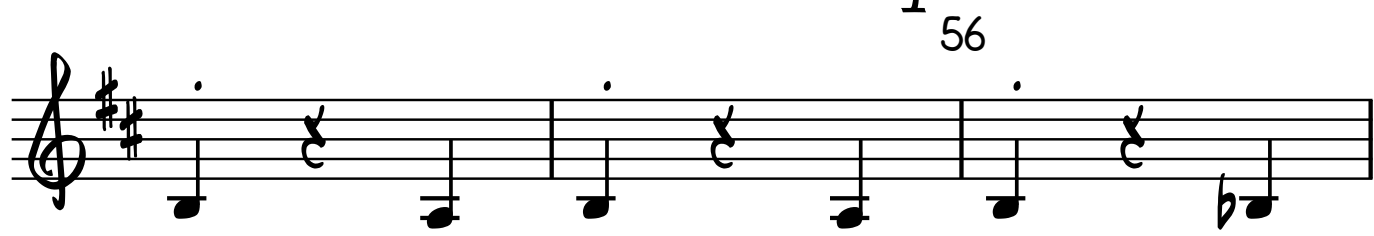
44 (C) 48



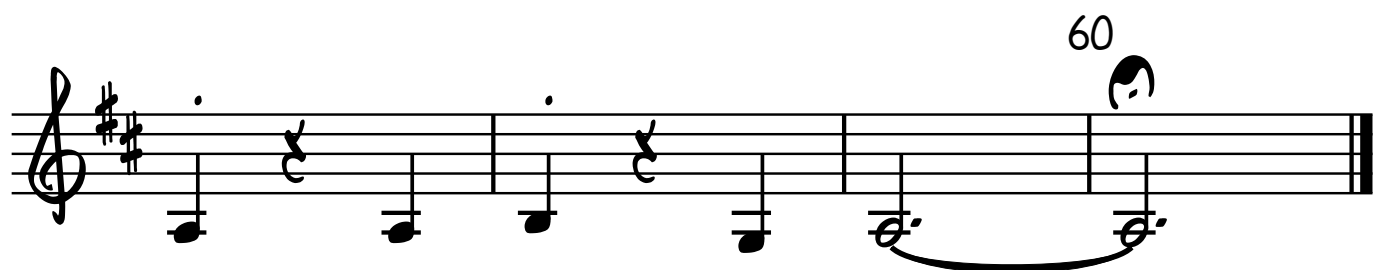
52



56



60



0 ADORAI O SENHOR (HASD 02)

GRUPO INSTRUMENTAL PGM

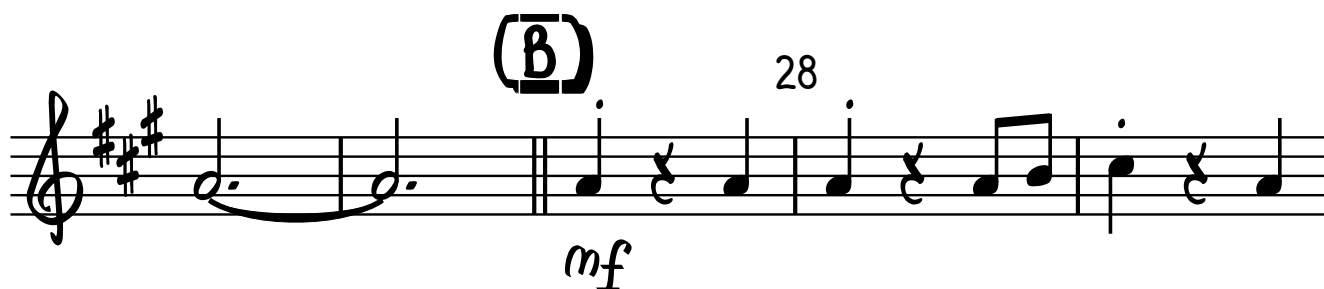
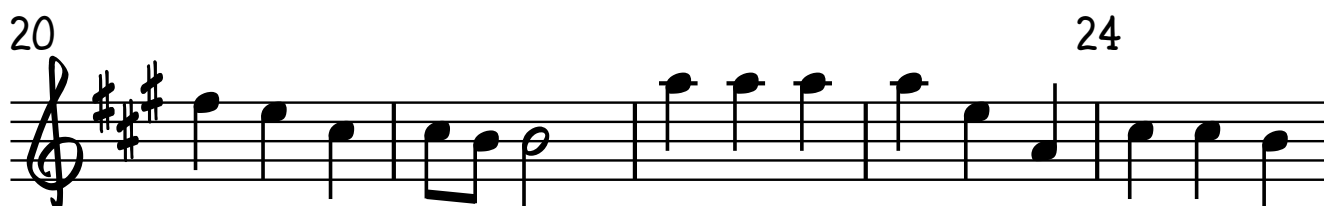
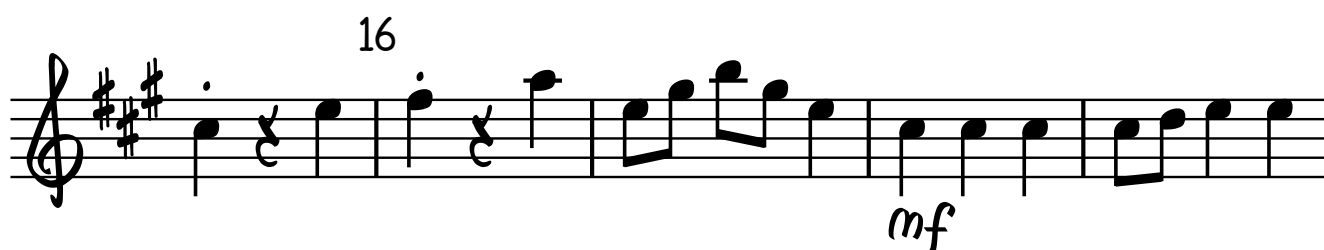
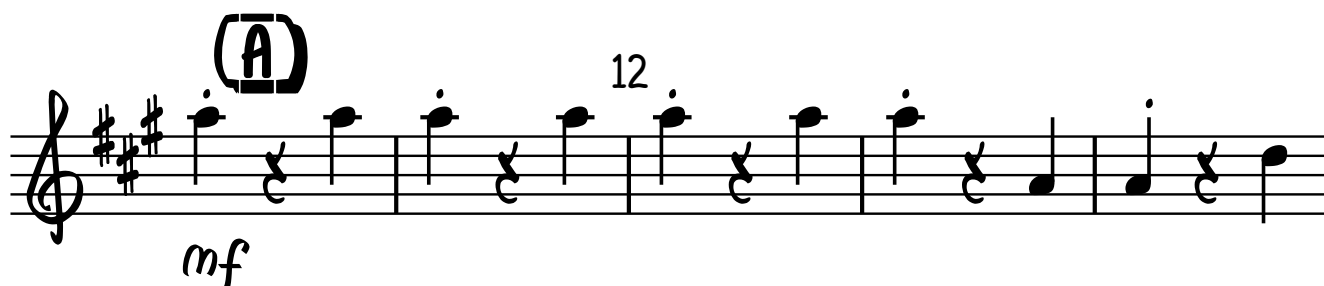
ALTO SAXOPHONE I

EDWIN BARNES

ARR. DENIS NOGUEIRA

ALEGRE E ENTUSIASMO = 114

4



V.S.

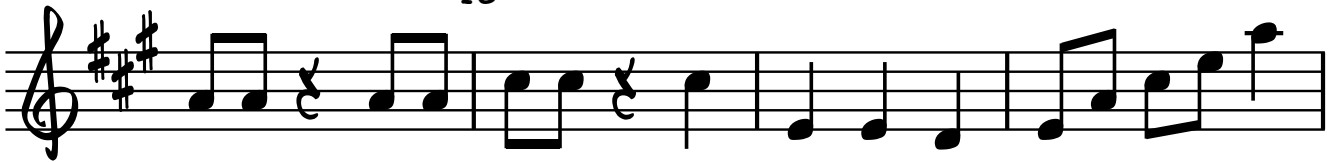
ALTO SAXOPHONE I

2

36

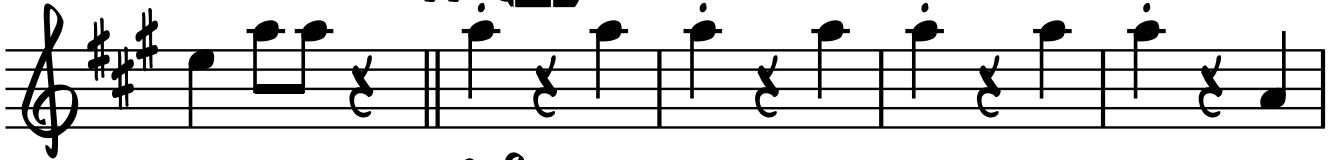


40



44

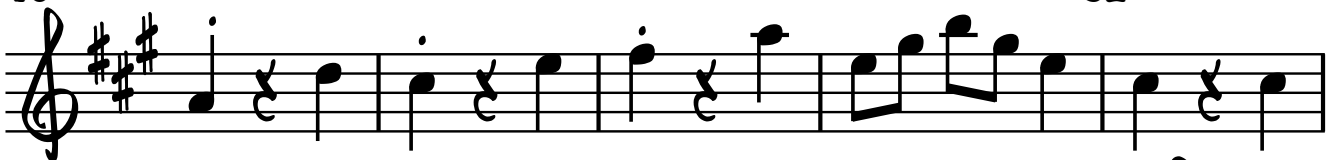
(C)



mf

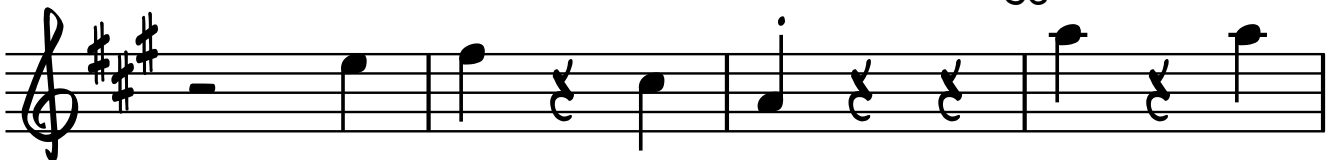
48

52



mf

56



60



0 ADORAI O SENHOR (HASD 02)

GRUPO INSTRUMENTAL PGM

ALTO SAXOPHONE II

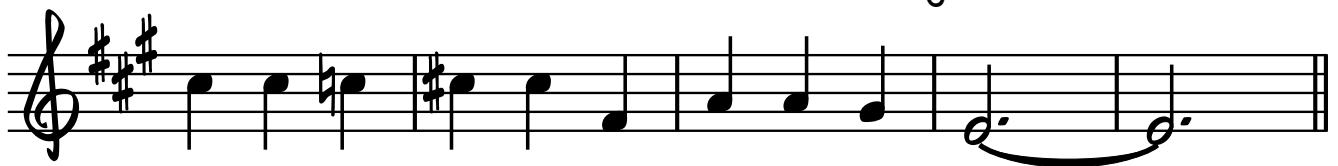
EDWIN BARNES
ARR. DENIS NOGUEIRA

ALEGRE E ENTUSIASMO = 114

4



8



(A)

12



16



20

24

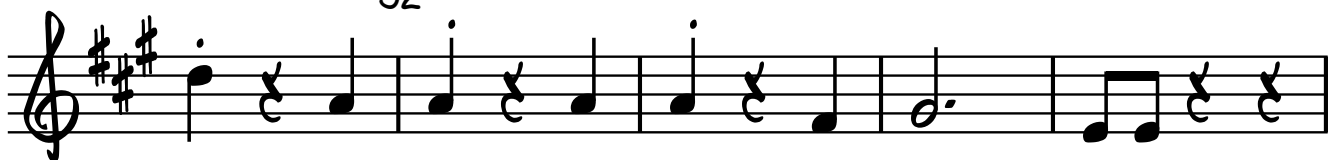


(B)

28



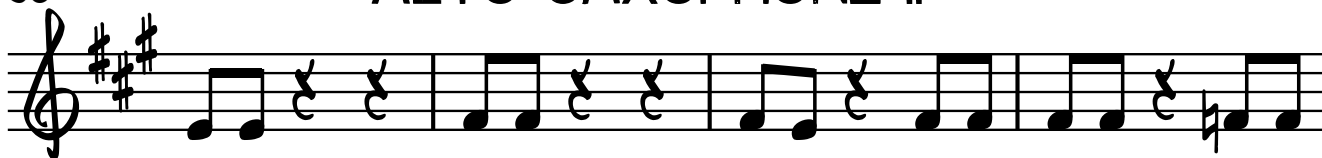
32



V.S.

236

ALTO SAXOPHONE II



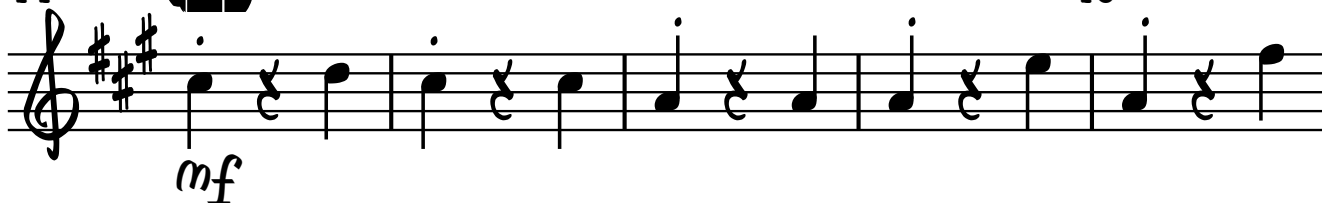
40



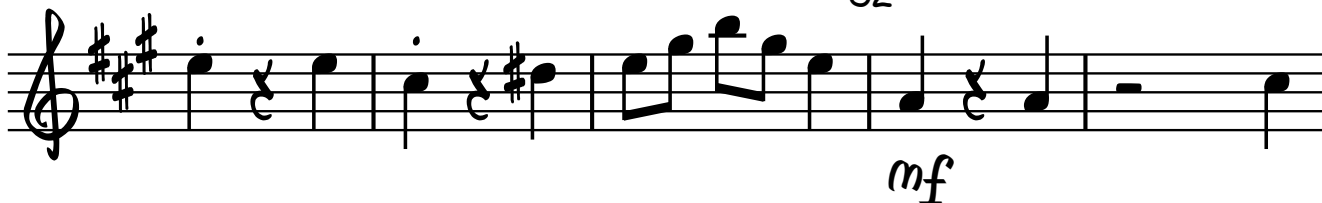
44

(C)

48



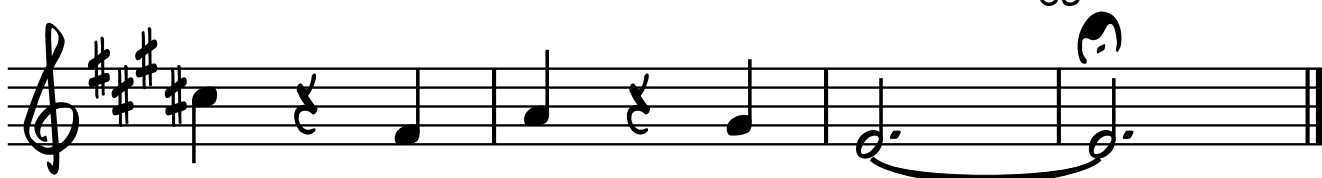
52



56



60



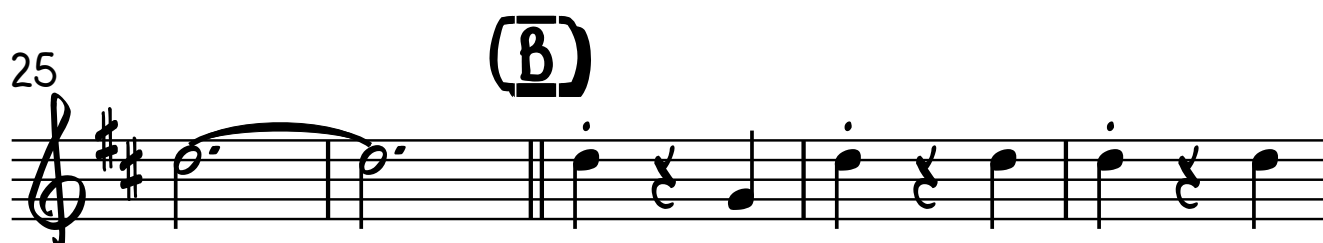
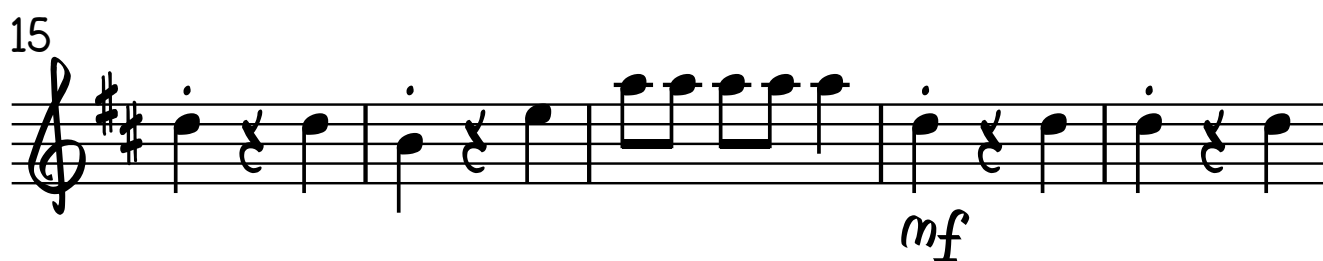
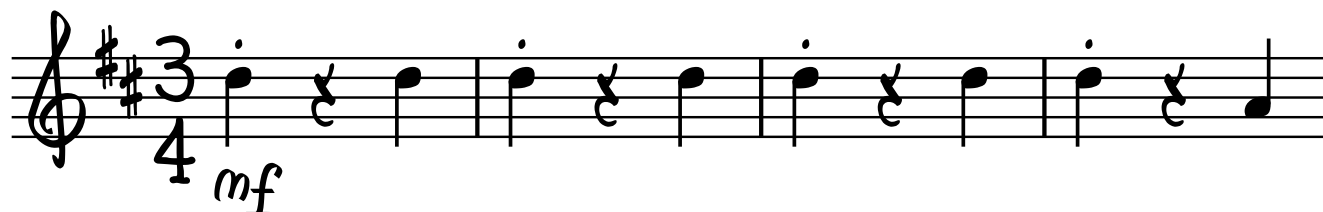
0 ADORAI O SENHOR (HASD 02)

GRUPO INSTRUMENTAL PGM

TENOR SAXOPHONE

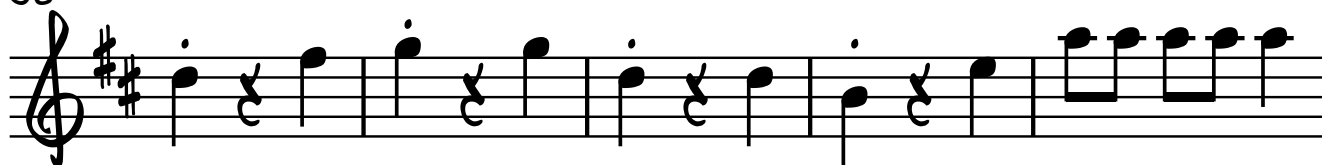
EDWIN BARNES
ARR. DENIS NOGUEIRA

ALEGRE E ENTUSIASMO = 114

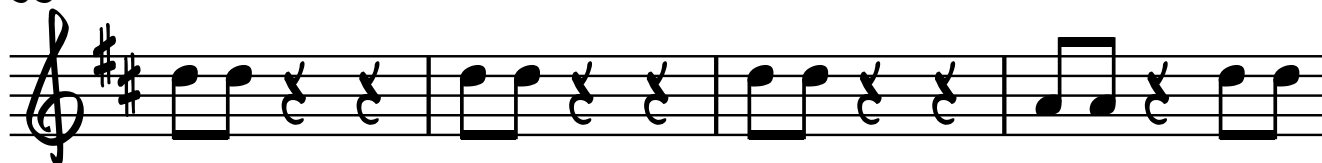


230

TENOR SAXOPHONE



35



39

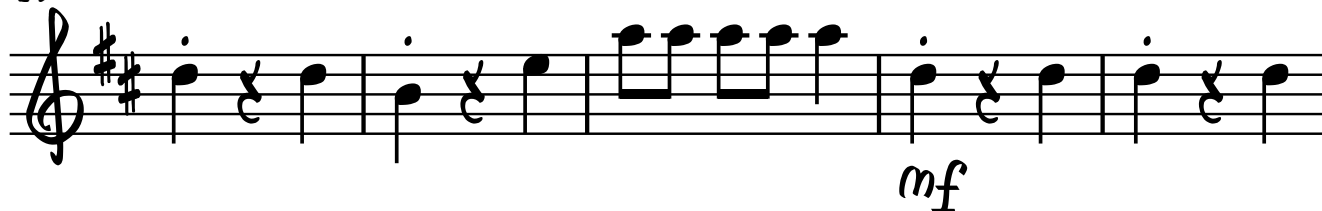


44

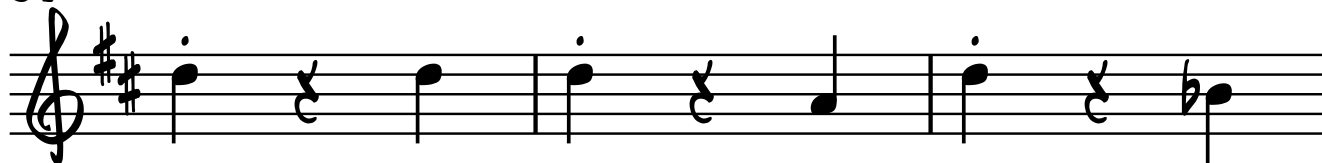
(C)

*mf*

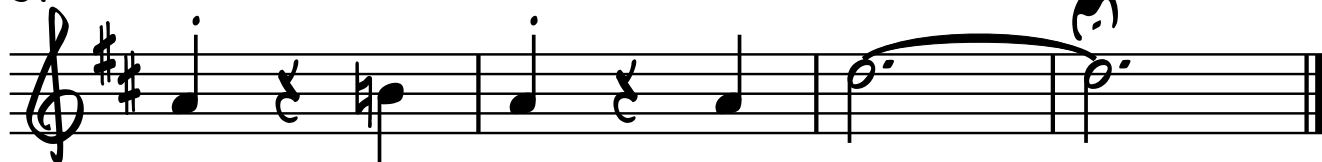
49

*mf*

54



57



0 ADORAI O SENHOR (HASD 02)

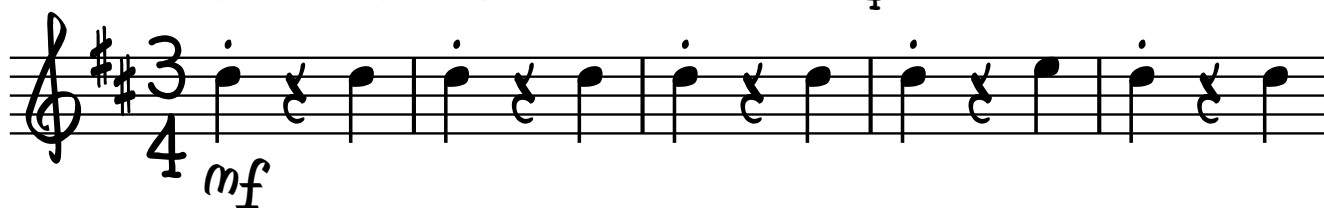
GRUPO INSTRUMENTAL PGM

EDWIN BARNES
ARR. DENIS NOGUEIRA

TRUMPET IN Bb I

ALEGRE E ENTUSIASMO = 114

4



8

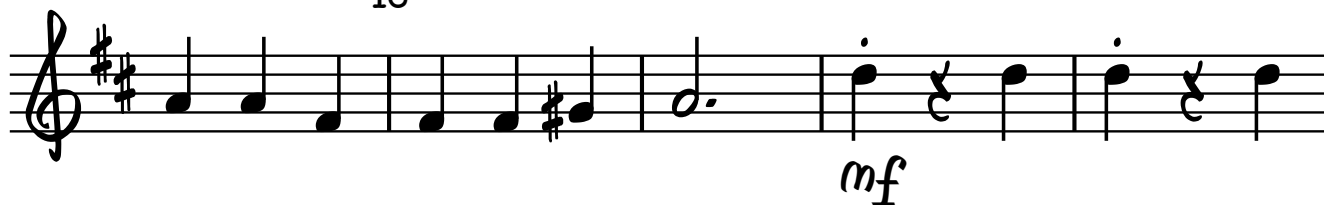


(A)

12



16



20

24



(B)

28



32



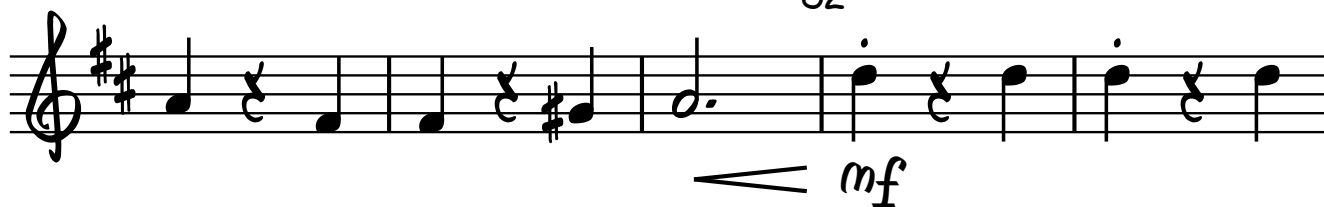
2

3rd TRUMPET IN B \flat I

40



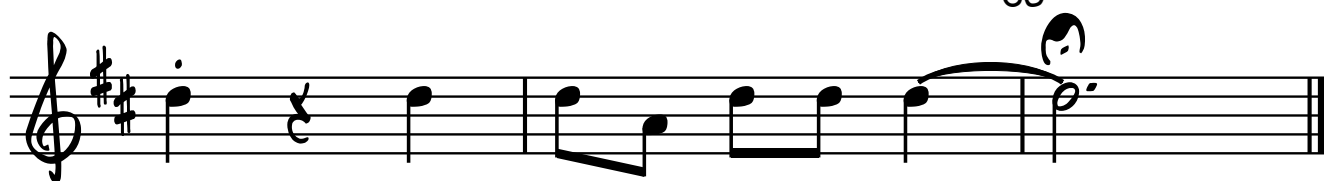
52



56



60



0 ADORAI O SENHOR (HARD 02)

GRUPO INSTRUMENTAL PGM

TRUMPET IN Bb II

EDWIN BARNES
ARR. DENIS NOGUEIRA

ALEGRE E ENTUSIASMO = 114

4



8



(A)

12

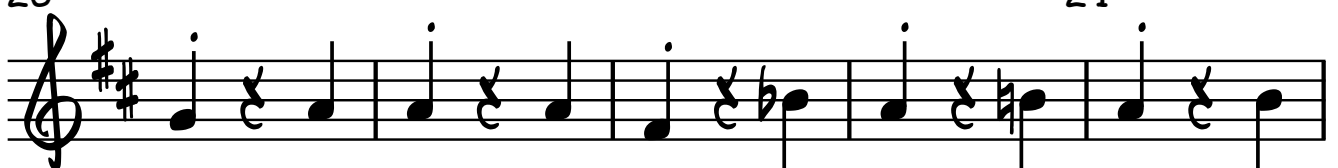


16



20

24

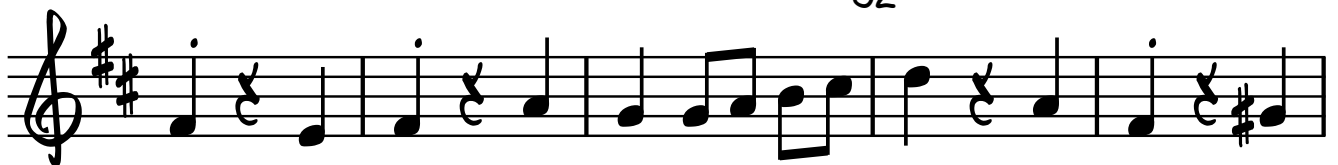


(B)

28



32



V.S.

2

TRUMPET IN B \flat II

36



40

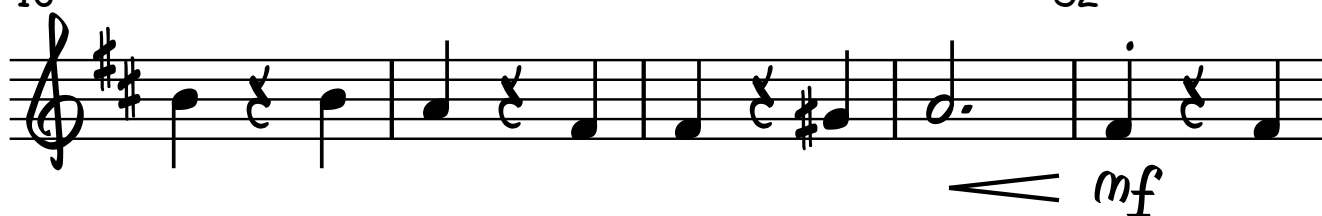


44 (C)



48

52



56



60



TROMBONE

GRUPO INSTRUMENTAL PGM

EDWIN BARNES
ARR. DENIS NOGUEIRA

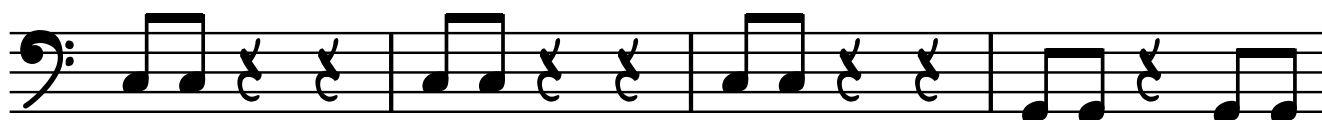
ALEGRE E ENTUSIASMO = 114

32

Musical notation for the bass line of the first system, measures 32-36. The notation is in bass clef and includes various note values and rests.

2

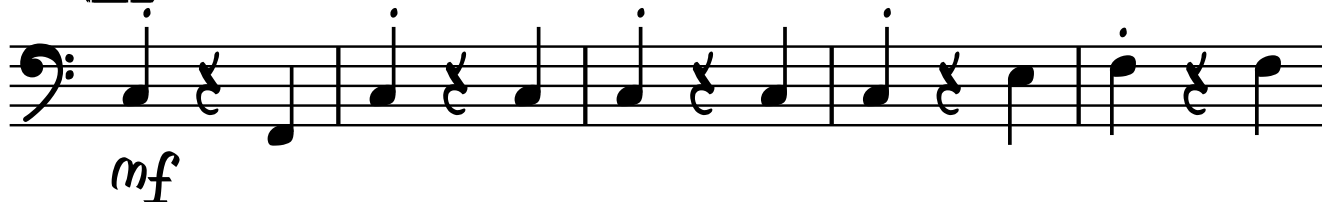
36 TROMBONE



40



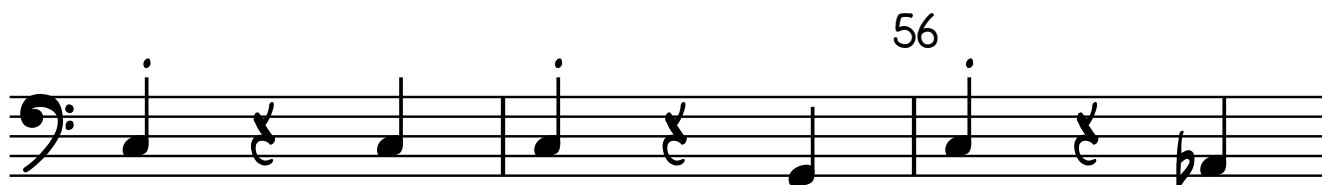
44 (C)



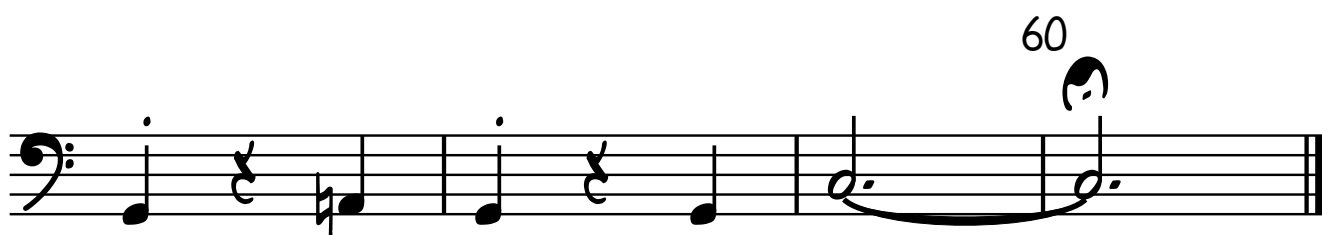
48



52



56



60

0 ADORAI O SENHOR (HASD 02)

GRUPO INSTRUMENTAL PGM

EDWIN BARNES

ARR. DENIS NOGUEIRA

BASE

C

C/E C F/C C

F/G G

ALEGRE E ENTUSIASMO = 114

4



C Ab C/G Am C/G F/G 8 C



C F C 12 G C C/E F



C 16 Am D7 G C C/E C



F/C C F/G G C AbmE/G Am C/G F/G



C C (B) F 28 C G



C C/E F 32 C Am D7 G



BASE

2 C 36 C/E C F/C C F/G G

mf

C Ab C/G 40 Am C/G F/G C

mf

(C) 44 C F C G C C/E 48 F

mf

C Am D7 G 52 C C/E C

mf

F/C C F/G G 56 C Ab

mf

C/G Am C/G F/G C 60

mf